

Product datasheet for **TA347922**

Twist (TWIST1) Rabbit Polyclonal Antibody

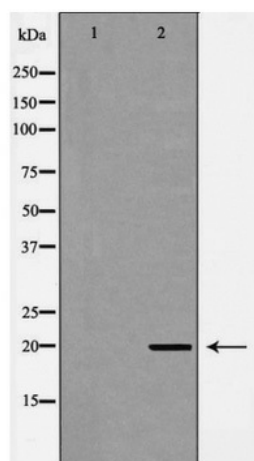
Product data:

Product Type:	Primary Antibodies
Applications:	WB
Recommended Dilution:	WB: 1:500-1:2000
Reactivity:	Human, Mouse, Rat
Host:	Rabbit
Isotype:	IgG
Clonality:	Polyclonal
Immunogen:	The immunogen for anti-twist Antibody: A synthesized peptide derived from human twist
Formulation:	Rabbit IgG in phosphate buffered saline , pH 7.4, 150mM NaCl, 0.02% sodium azide and 50% glycerol.Store at -20 ?.Stable for 12 months from date of receipt
Concentration:	lot specific
Purification:	Immunogen affinity purified
Conjugation:	Unconjugated
Storage:	Store at -20°C as received.
Stability:	Stable for 12 months from date of receipt.
Predicted Protein Size:	20 kDa
Gene Name:	twist family bHLH transcription factor 1
Database Link:	NP_000465 Entrez Gene 22160 Mouse Entrez Gene 85489 Rat Entrez Gene 7291 Human Q15672
Background:	Acts as a transcriptional regulator. Inhibits myogenesis by sequestering E proteins, inhibiting trans-activation by MEF2, and inhibiting DNA-binding by MYOD1 through physical interaction. This interaction probably involves the basic domains of both proteins. Also represses expression of proinflammatory cytokines such as TNFA and IL1B
Synonyms:	ACS3; bHLHa38; BPES2; BPES3; CRS; CRS1; CSO; SCS; TWIST
Note:	twist Antibody detects endogenous levels of total twist
Protein Families:	Druggable Genome



[View online »](#)

Product images:



Western blot analysis of twist expression in Jurkat cells