

Product datasheet for **TA347919**

Claudin 5 (CLDN5) Rabbit Polyclonal Antibody

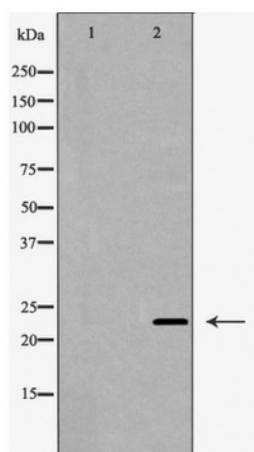
Product data:

Product Type:	Primary Antibodies
Applications:	WB
Recommended Dilution:	WB: 1:500-1:2000
Reactivity:	Mouse, Rat, Human, Pig, Cow
Host:	Rabbit
Isotype:	IgG
Clonality:	Polyclonal
Immunogen:	The immunogen for anti-Claudin 5 Antibody: A synthesized peptide derived from human Claudin 5
Formulation:	Rabbit IgG in phosphate buffered saline , pH 7.4, 150mM NaCl, 0.02% sodium azide and 50% glycerol.Store at -20 ?.Stable for 12 months from date of receipt
Concentration:	lot specific
Purification:	Immunogen affinity purified
Conjugation:	Unconjugated
Storage:	Store at -20°C as received.
Stability:	Stable for 12 months from date of receipt.
Predicted Protein Size:	23 kDa
Gene Name:	claudin 5
Database Link:	NP_003268 Entrez Gene 12741 Mouse Entrez Gene 65131 Rat Entrez Gene 7122 Human O00501
Background:	Plays a major role in tight junction-specific obliteration of the intercellular space.
Synonyms:	AWAL; BEC1; CPETRL1; TMVCF
Note:	Claudin 5 Antibody detects endogenous levels of total Claudin 5
Protein Families:	Transmembrane
Protein Pathways:	Cell adhesion molecules (CAMs), Leukocyte transendothelial migration, Tight junction



[View online »](#)

Product images:



Western blot analysis of Claudin 5 expression in A549 cell