

## Product datasheet for **TA347917**

### Claudin 6 (CLDN6) Rabbit Polyclonal Antibody

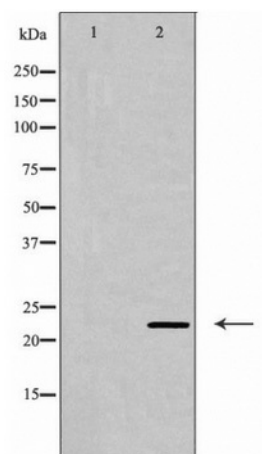
#### Product data:

Product Type:	Primary Antibodies
Applications:	WB
Recommended Dilution:	WB: 1:500-1:2000
Reactivity:	Human, Mouse, Rat
Host:	Rabbit
Isotype:	IgG
Clonality:	Polyclonal
Immunogen:	The immunogen for anti-CLDN6 Antibody: A synthesized peptide derived from human CLDN6
Formulation:	Rabbit IgG in phosphate buffered saline , pH 7.4, 150mM NaCl, 0.02% sodium azide and 50% glycerol.Store at -20 ?.Stable for 12 months from date of receipt
Concentration:	lot specific
Purification:	Immunogen affinity purified
Conjugation:	Unconjugated
Storage:	Store at -20°C as received.
Stability:	Stable for 12 months from date of receipt.
Predicted Protein Size:	23 kDa
Gene Name:	claudin 6
Database Link:	<a href="#">NP_067018</a> <a href="#">Entrez Gene 54419 MouseEntrez Gene 287098 RatEntrez Gene 9074 Human P56747</a>
Background:	Plays a major role in tight junction-specific obliteration of the intercellular space.
Synonyms:	claudin 6; OTTHUMP00000159248
Note:	CLDN6 Antibody detects endogenous levels of total CLDN6
Protein Families:	Transmembrane
Protein Pathways:	Cell adhesion molecules (CAMs), Leukocyte transendothelial migration, Tight junction



[View online »](#)

## Product images:



Western blot analysis of CLDN6 expression in Jurkat cells