

Product datasheet for **TA347916**

GPR10 (PRLHR) Rabbit Polyclonal Antibody

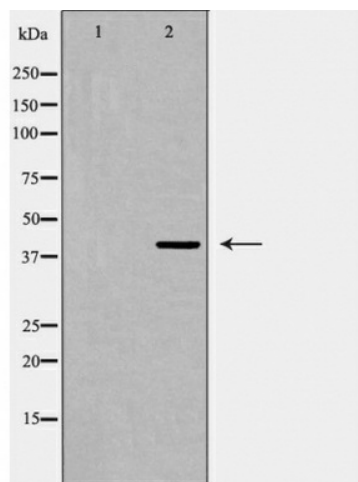
Product data:

Product Type:	Primary Antibodies
Applications:	WB
Recommended Dilution:	WB: 1:500-1:2000
Reactivity:	Human, Mouse, Rat
Host:	Rabbit
Isotype:	IgG
Clonality:	Polyclonal
Immunogen:	The immunogen for anti-PRLHR Antibody: A synthesized peptide derived from human PRLHR
Formulation:	Rabbit IgG in phosphate buffered saline , pH 7.4, 150mM NaCl, 0.02% sodium azide and 50% glycerol.Store at -20 ?.Stable for 12 months from date of receipt
Concentration:	lot specific
Purification:	Immunogen affinity purified
Conjugation:	Unconjugated
Storage:	Store at -20°C as received.
Stability:	Stable for 12 months from date of receipt.
Predicted Protein Size:	41 kDa
Gene Name:	prolactin releasing hormone receptor
Database Link:	NP_004239 Entrez Gene 226278 MouseEntrez Gene 246075 RatEntrez Gene 2834 Human P49683
Background:	Receptor for prolactin-releasing peptide (PrRP). Implicated in lactation, regulation of food intake and pain-signal processing.
Synonyms:	GPR10; GR3; PrRPR
Note:	PRLHR Antibody detects endogenous levels of total PRLHR
Protein Families:	Druggable Genome, GPCR, Transmembrane
Protein Pathways:	Neuroactive ligand-receptor interaction



[View online »](#)

Product images:



Western blot analysis of PRLHR expression in Jurkat cell extract