

## Product datasheet for **TA347915**

### EFEMP2 Rabbit Polyclonal Antibody

#### Product data:

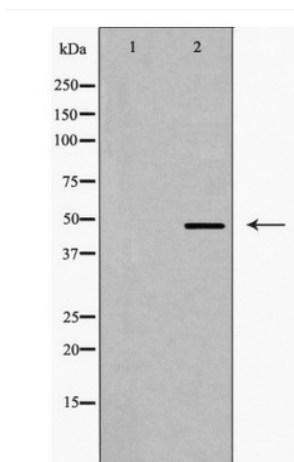
Product Type:	Primary Antibodies
Applications:	WB
Recommended Dilution:	WB: 1:500-1:2000
Reactivity:	Human
Host:	Rabbit
Isotype:	IgG
Clonality:	Polyclonal
Immunogen:	The immunogen for anti-EFEMP2 Antibody: A synthesized peptide derived from human EFEMP2
Formulation:	Rabbit IgG in phosphate buffered saline , pH 7.4, 150mM NaCl, 0.02% sodium azide and 50% glycerol.Store at -20 ?.Stable for 12 months from date of receipt
Concentration:	lot specific
Purification:	Immunogen affinity purified
Conjugation:	Unconjugated
Storage:	Store at -20°C as received.
Stability:	Stable for 12 months from date of receipt.
Predicted Protein Size:	49 kDa
Gene Name:	EGF containing fibulin like extracellular matrix protein 2
Database Link:	<a href="#">NP_058634</a> <a href="#">Entrez Gene 30008 Human</a> <a href="#">O95967</a>
Background:	Defects in EFEMP2 are a cause of cutis laxa autosomal recessive type 1 (ARCL1) [MIM:219100]. Hereditary cutis laxa refers to a heterogeneous group of connective tissue disorders characterized by cutaneous abnormalities and variable systemic manifestations. The most constant clinical feature is loose skin, sagging over the face and trunk.
Synonyms:	ARCL1B; FBLN4; MBP1; UPH1
Note:	EFEMP2 Antibody detects endogenous levels of total EFEMP2



[View online »](#)

Protein Families: Druggable Genome, Secreted Protein

**Product images:**



Western blot analysis of EFEMP2 expression in 3T3 cells