

## Product datasheet for **TA347914**

### **TOMM20 Rabbit Polyclonal Antibody**

#### **Product data:**

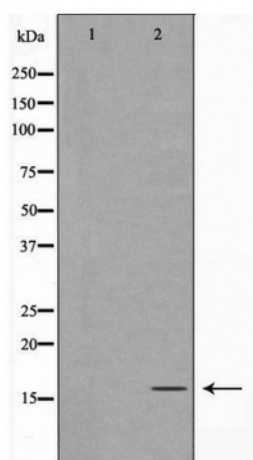
<b>Product Type:</b>	Primary Antibodies
<b>Applications:</b>	WB
<b>Recommended Dilution:</b>	WB: 1:500-1:2000
<b>Reactivity:</b>	Human, Mouse, Rat
<b>Host:</b>	Rabbit
<b>Isotype:</b>	IgG
<b>Clonality:</b>	Polyclonal
<b>Immunogen:</b>	The immunogen for anti-TOMM20 Antibody: A synthesized peptide derived from human TOMM20
<b>Formulation:</b>	Rabbit IgG in phosphate buffered saline , pH 7.4, 150mM NaCl, 0.02% sodium azide and 50% glycerol.Store at -20 ?.Stable for 12 months from date of receipt
<b>Concentration:</b>	lot specific
<b>Purification:</b>	Immunogen affinity purified
<b>Conjugation:</b>	Unconjugated
<b>Storage:</b>	Store at -20°C as received.
<b>Stability:</b>	Stable for 12 months from date of receipt.
<b>Predicted Protein Size:</b>	16 kDa
<b>Gene Name:</b>	translocase of outer mitochondrial membrane 20
<b>Database Link:</b>	<a href="#">NP_055580</a> <a href="#">Entrez Gene 67952 Mouse</a> <a href="#">Entrez Gene 266601 Rat</a> <a href="#">Entrez Gene 9804 Human</a> <a href="#">Q15388</a>
<b>Background:</b>	Central component of the receptor complex responsible for the recognition and translocation of cytosolically synthesized mitochondrial preproteins. Together with TOM22 functions as the transit peptide receptor at the surface of the mitochondrion outer membrane and facilitates the movement of preproteins into the TOM40 translocation pore
<b>Synonyms:</b>	MAS20; MOM19; TOM20
<b>Note:</b>	TOMM20 Antibody detects endogenous levels of total TOMM20



[View online »](#)

Protein Families: Druggable Genome, Transmembrane

### Product images:



Western blot analysis of TOMM20 expression in K562 cells