

Product datasheet for **TA347913**

CDHH (CDH13) Rabbit Polyclonal Antibody

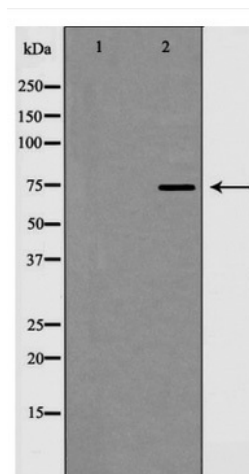
Product data:

Product Type:	Primary Antibodies
Applications:	WB
Recommended Dilution:	WB: 1:500-1:2000
Reactivity:	Human, Mouse, Rat
Host:	Rabbit
Isotype:	IgG
Clonality:	Polyclonal
Immunogen:	The immunogen for anti-T-cadherin Antibody: A synthesized peptide derived from human T-cadherin
Formulation:	Rabbit IgG in phosphate buffered saline , pH 7.4, 150mM NaCl, 0.02% sodium azide and 50% glycerol.Store at -20 ?.Stable for 12 months from date of receipt
Concentration:	lot specific
Purification:	Immunogen affinity purified
Conjugation:	Unconjugated
Storage:	Store at -20°C as received.
Stability:	Stable for 12 months from date of receipt.
Predicted Protein Size:	78 kDa
Gene Name:	cadherin 13
Database Link:	NP_001248 Entrez Gene 12554 Mouse Entrez Gene 192248 Rat Entrez Gene 1012 Human P55290
Background:	Cadherins are calcium dependent cell adhesion proteins. They preferentially interact with themselves in a homophilic manner in connecting cells; cadherins may thus contribute to the sorting of heterogeneous cell types. May act as a negative regulator of neural cell growth.
Synonyms:	CDHH; P105
Note:	T-cadherin Antibody detects endogenous levels of total T-cadherin



[View online »](#)

Product images:



Western blot analysis of T-cadherin expression in HT29 cell lysate