

## Product datasheet for **TA347912**

### CUX1 Rabbit Polyclonal Antibody

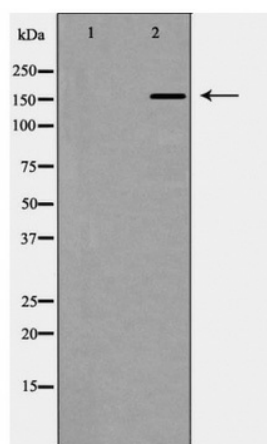
#### Product data:

Product Type:	Primary Antibodies
Applications:	WB
Recommended Dilution:	WB: 1:500
Reactivity:	Mouse, Human
Host:	Rabbit
Isotype:	IgG
Clonality:	Polyclonal
Immunogen:	The immunogen for anti-CUTL1 Antibody: A synthesized peptide
Formulation:	Rabbit IgG in phosphate buffered saline , pH 7.4, 150mM NaCl, 0.02% sodium azide and 50% glycerol.Store at -20 ?.Stable for 12 months from date of receipt
Concentration:	lot specific
Purification:	Immunogen affinity purified
Conjugation:	Unconjugated
Storage:	Store at -20°C as received.
Stability:	Stable for 12 months from date of receipt.
Predicted Protein Size:	164KD
Gene Name:	cut like homeobox 1
Database Link:	<a href="#">NP_001904</a> <a href="#">Entrez Gene 13047 MouseEntrez Gene 1523 Human</a> <a href="#">Q13948</a>
Background:	Belongs to the CASP family. May be involved in intra-Golgi retrograde transport. Homodimer; disulfide-linked. Interacts with GOLGA5.
Synonyms:	CASP; CDP; CDP1; Clox; COY1; Cut; CUTL1; CUX; Cux; GOLIM6; Nbla10317; p100; p110; p200
Note:	CUTL1 Antibody detects endogenous levels of total CUTL1
Protein Families:	Transcription Factors, Transmembrane



[View online »](#)

## Product images:



Western blot analysis of CUTL1 expression in K562 cells