

Product datasheet for **TA347911**

Integrin alpha 5 (ITGA5) Rabbit Polyclonal Antibody

Product data:

Product Type:	Primary Antibodies
Applications:	WB
Recommended Dilution:	WB: 1:500-1:2000
Reactivity:	Human, Mouse, Rat
Host:	Rabbit
Isotype:	IgG
Clonality:	Polyclonal
Immunogen:	The immunogen for anti-Integrin α 5 (CD49e) Antibody: A synthesized peptide derived from human Integrin α 5 (CD49e)
Formulation:	Rabbit IgG in phosphate buffered saline , pH 7.4, 150mM NaCl, 0.02% sodium azide and 50% glycerol.Store at -20 $^{\circ}$ C.Stable for 12 months from date of receipt
Concentration:	lot specific
Purification:	Immunogen affinity purified
Conjugation:	Unconjugated
Storage:	Store at -20 $^{\circ}$ C as received.
Stability:	Stable for 12 months from date of receipt.
Predicted Protein Size:	114 kDa
Gene Name:	integrin subunit alpha 5
Database Link:	NP_002196 Entrez Gene 16402 Mouse Entrez Gene 315346 Rat Entrez Gene 3678 Human P08648
Background:	Integrins are heterodimers composed of noncovalently associated transmembrane α and β subunits. The 16 α and 8 β subunits heterodimerize to produce more than 20 different receptors. Most integrin receptors bind ligands that are components of the extracellular matrix, including fibronectin, collagen and Vitronectin.
Synonyms:	CD49e; FNRA; VLA-5; VLA5A
Note:	Integrin α 5 (CD49e) Antibody detects endogenous levels of total Integrin α 5 (CD49e)

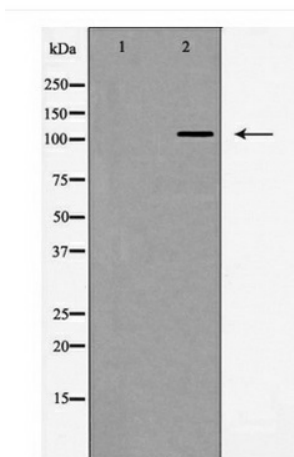


[View online »](#)

Protein Families: Druggable Genome, ES Cell Differentiation/IPS, Transmembrane

Protein Pathways: Arrhythmogenic right ventricular cardiomyopathy (ARVC), Dilated cardiomyopathy, ECM-receptor interaction, Focal adhesion, Hematopoietic cell lineage, Hypertrophic cardiomyopathy (HCM), Regulation of actin cytoskeleton

Product images:



Western blot analysis of Integrin a5 (CD49e) expression in HeLa cells