

Product datasheet for **TA347910**

Superoxide Dismutase 1 (SOD1) Rabbit Polyclonal Antibody

Product data:

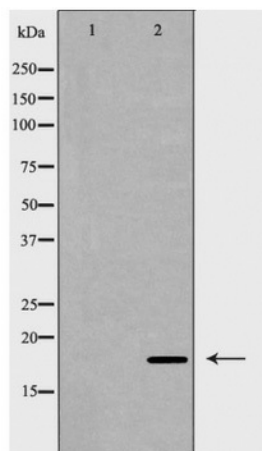
Product Type:	Primary Antibodies
Applications:	WB
Recommended Dilution:	WB: 1:1000
Reactivity:	Human, Mouse, Rat
Host:	Rabbit
Isotype:	IgG
Clonality:	Polyclonal
Immunogen:	The immunogen for anti-SOD1 Antibody: Synthetic peptide from SOD1
Formulation:	Rabbit IgG in phosphate buffered saline , pH 7.4, 150mM NaCl, 0.02% sodium azide and 50% glycerol.Store at -20 ?.Stable for 12 months from date of receipt
Concentration:	lot specific
Purification:	Immunogen affinity purified
Conjugation:	Unconjugated
Storage:	Store at -20°C as received.
Stability:	Stable for 12 months from date of receipt.
Predicted Protein Size:	18kd
Gene Name:	superoxide dismutase 1, soluble
Database Link:	NP_000445 Entrez Gene 20655 Mouse Entrez Gene 24786 Rat Entrez Gene 6647 Human P00441
Background:	Superoxide dismutase (SOD) is an antioxidant enzyme involved in the defense system against reactive oxygen species (ROS). SOD catalyzes the dismutation reaction of superoxide radical anion (O ₂ ⁻) to hydrogen peroxide, which is then catalyzed to innocuous O ₂ and H ₂ O by glutathione peroxidase and catalase. Several classes of SOD have been identified.
Synonyms:	ALS; ALS1; HEL-S-44; homodimer; hSod1; IPOA; SOD
Note:	SOD1 Antibody detects endogenous levels of total SOD1
Protein Families:	Druggable Genome



[View online »](#)

Protein Pathways: Amyotrophic lateral sclerosis (ALS), Huntington's disease, Prion diseases

Product images:



Western blot analysis of SOD1 expression in Jurkat cells