

## Product datasheet for **TA347909**

### Angiotensin Converting Enzyme 1 (ACE) Rabbit Polyclonal Antibody

#### Product data:

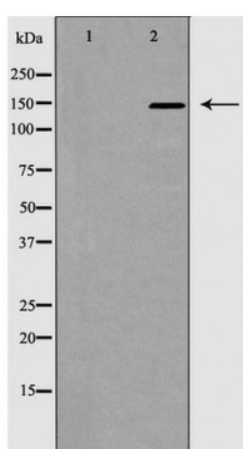
Product Type:	Primary Antibodies
Applications:	WB
Recommended Dilution:	WB: 1:500-1:2000
Reactivity:	Human, Mouse, Rat
Host:	Rabbit
Isotype:	IgG
Clonality:	Polyclonal
Immunogen:	The immunogen for anti-ACE1 Antibody: A synthesized peptide derived from human ACE1
Formulation:	Rabbit IgG in phosphate buffered saline , pH 7.4, 150mM NaCl, 0.02% sodium azide and 50% glycerol.Store at -20 ?.Stable for 12 months from date of receipt
Concentration:	lot specific
Purification:	Immunogen affinity purified
Conjugation:	Unconjugated
Storage:	Store at -20°C as received.
Stability:	Stable for 12 months from date of receipt.
Predicted Protein Size:	149 kDa
Gene Name:	angiotensin I converting enzyme
Database Link:	<a href="#">NP_001171528</a> <a href="#">Entrez Gene 11421 MouseEntrez Gene 24310 RatEntrez Gene 1636 Human P12821</a>
Background:	Converts angiotensin I to angiotensin II by release of the terminal His-Leu, this results in an increase of the vasoconstrictor activity of angiotensin. Also able to inactivate bradykinin, a potent vasodilator. Has also a glycosidase activity which releases GPI-anchored proteins from the membrane by cleaving the mannose linkage in the GPI moiety.
Synonyms:	ACE1; CD143; DCP; DCP1
Note:	ACE1 Antibody detects endogenous levels of total ACE1
Protein Families:	Druggable Genome, ES Cell Differentiation/IPS, Protease, Secreted Protein, Transmembrane



[View online »](#)

Protein Pathways: Hypertrophic cardiomyopathy (HCM), Renin-angiotensin system

**Product images:**



Western blot analysis of ACE1 expression in mouse kidney