

Product datasheet for **TA347907**

Interferon gamma (IFNG) Rabbit Polyclonal Antibody

Product data:

Product Type:	Primary Antibodies
Applications:	WB
Recommended Dilution:	WB: 1:500-1:2000
Reactivity:	Human
Host:	Rabbit
Isotype:	IgG
Clonality:	Polyclonal
Immunogen:	The immunogen for anti-Interferon gamma Antibody: A synthesized peptide derived from human Interferon gamma
Formulation:	Rabbit IgG in phosphate buffered saline , pH 7.4, 150mM NaCl, 0.02% sodium azide and 50% glycerol.Store at -20 ?.Stable for 12 months from date of receipt
Concentration:	lot specific
Purification:	Immunogen affinity purified
Conjugation:	Unconjugated
Storage:	Store at -20°C as received.
Stability:	Stable for 12 months from date of receipt.
Predicted Protein Size:	19 kDa
Gene Name:	interferon, gamma
Database Link:	NP_000610 Entrez Gene 3458 Human P01579
Background:	Produced by lymphocytes activated by specific antigens or mitogens. IFN-gamma, in addition to having antiviral activity, has important immunoregulatory functions. It is a potent activator of macrophages, it has antiproliferative effects on transformed cells and it can potentiate the antiviral and antitumor effects of the type I interferons.
Synonyms:	IFG; IFI
Note:	Interferon gamma Antibody detects endogenous levels of total Interferon gamma

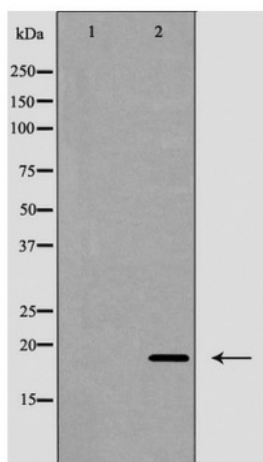


[View online »](#)

Protein Families: Druggable Genome, Secreted Protein

Protein Pathways: Allograft rejection, Cytokine-cytokine receptor interaction, Graft-versus-host disease, Jak-STAT signaling pathway, Natural killer cell mediated cytotoxicity, Proteasome, Regulation of autophagy, Systemic lupus erythematosus, T cell receptor signaling pathway, TGF-beta signaling pathway, Type I diabetes mellitus

Product images:



Western blot analysis of Interferon gamma expression in HepG2 cells,