

Product datasheet for **TA347905**

S100A10 Rabbit Polyclonal Antibody

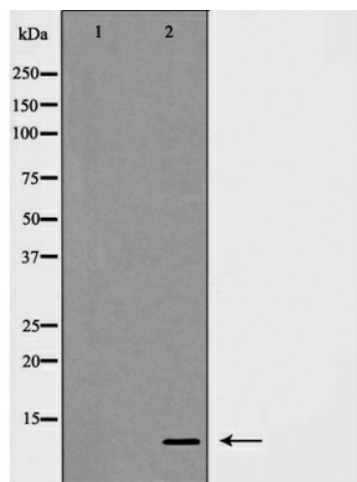
Product data:

Product Type:	Primary Antibodies
Applications:	WB
Recommended Dilution:	WB: 1:500-1:2000
Reactivity:	Human, Mouse, Rat
Host:	Rabbit
Isotype:	IgG
Clonality:	Polyclonal
Immunogen:	The immunogen for anti-S100 A10 Antibody: A synthesized peptide derived from human S100 A10
Formulation:	Rabbit IgG in phosphate buffered saline , pH 7.4, 150mM NaCl, 0.02% sodium azide and 50% glycerol.Store at -20 ?.Stable for 12 months from date of receipt
Concentration:	lot specific
Purification:	Immunogen affinity purified
Conjugation:	Unconjugated
Storage:	Store at -20°C as received.
Stability:	Stable for 12 months from date of receipt.
Predicted Protein Size:	11 kDa
Gene Name:	S100 calcium binding protein A10
Database Link:	NP_002957 Entrez Gene 20194 Mouse Entrez Gene 81778 Rat Entrez Gene 6281 Human P60903
Background:	Because S100A10 induces the dimerization of ANXA2/p36, it may function as a regulator of protein phosphorylation in that the ANXA2 monomer is the preferred target (in vitro) of tyrosine-specific kinase.
Synonyms:	42C; ANX2L; ANX2LG; CAL1L; Ca[1]; CLP11; GP11; p10; P11
Note:	S100 A10 Antibody detects endogenous levels of total S100 A10
Protein Families:	Transmembrane



[View online »](#)

Product images:



Western blot analysis of S100 A10 expression in COLO cells