

## Product datasheet for **TA347904**

### PDGF AA (PDGFA) Rabbit Polyclonal Antibody

#### Product data:

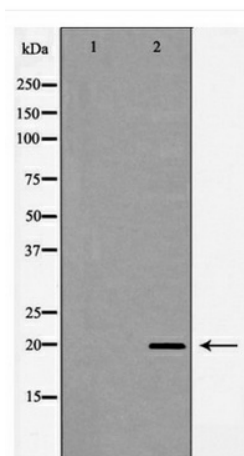
Product Type:	Primary Antibodies
Applications:	WB
Recommended Dilution:	WB: 1:1000
Reactivity:	Human, Mouse, Rat
Host:	Rabbit
Isotype:	IgG
Clonality:	Polyclonal
Immunogen:	The immunogen for anti-PDGFA Antibody: A synthesized peptide
Formulation:	Rabbit IgG in phosphate buffered saline , pH 7.4, 150mM NaCl, 0.02% sodium azide and 50% glycerol.Store at -20 ?.Stable for 12 months from date of receipt
Concentration:	lot specific
Purification:	Immunogen affinity purified
Conjugation:	Unconjugated
Storage:	Store at -20°C as received.
Stability:	Stable for 12 months from date of receipt.
Predicted Protein Size:	20 kd
Gene Name:	platelet derived growth factor subunit A
Database Link:	<a href="#">NP_148983</a> <a href="#">Entrez Gene 18590 MouseEntrez Gene 25266 RatEntrez Gene 5154 Human P04085</a>
Background:	Platelet-derived growth factor is a potent mitogen for cells of mesenchymal origin. Binding of this growth factor to its receptor elicits a variety of cellular responses. It is released by platelets upon wounding and plays an important role in stimulating adjacent cells to grow and thereby heals the wound.
Synonyms:	PDGF-A; PDGF1
Note:	PDGFA Antibody detects endogenous levels of total PDGFA
Protein Families:	Druggable Genome



[View online »](#)

**Protein Pathways:**

Cytokine-cytokine receptor interaction, Focal adhesion, Gap junction, Glioma, MAPK signaling pathway, Melanoma, Pathways in cancer, Prostate cancer, Regulation of actin cytoskeleton

**Product images:**

Western blot analysis of PDGFA expression in Jurkat cells