

Product datasheet for **TA347903**

Bcl2 Binding component 3 (BBC3) Rabbit Polyclonal Antibody

Product data:

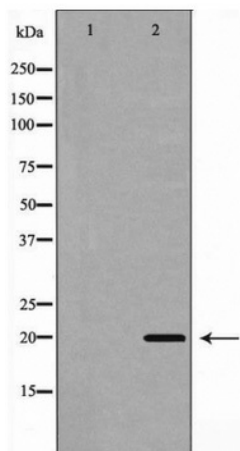
Product Type:	Primary Antibodies
Applications:	WB
Recommended Dilution:	WB: 1:500-1:2000
Reactivity:	Human, Mouse, Rat
Host:	Rabbit
Isotype:	IgG
Clonality:	Polyclonal
Immunogen:	The immunogen for anti-BBC3(PUMA) Antibody: A synthesized peptide derived from human BBC3(PUMA)
Formulation:	Rabbit IgG in phosphate buffered saline , pH 7.4, 150mM NaCl, 0.02% sodium azide and 50% glycerol.Store at -20 ?.Stable for 12 months from date of receipt
Concentration:	lot specific
Purification:	Immunogen affinity purified
Conjugation:	Unconjugated
Storage:	Store at -20°C as received.
Stability:	Stable for 12 months from date of receipt.
Predicted Protein Size:	20 kDa
Gene Name:	BCL2 binding component 3
Database Link:	NP_055232 Entrez Gene 170770 MouseEntrez Gene 317673 RatEntrez Gene 27113 Human Q96PG8
Background:	Essential mediator of p53/TP53-dependent and p53/TP53-independent apoptosis. Functions by promoting partial unfolding of BCL2L1 and dissociation of BCL2L1 from p53/TP53. Regulates ER stress-induced neuronal apoptosis
Synonyms:	JFY-1; JFY1; PUMA
Note:	BBC3(PUMA) Antibody detects endogenous levels of total BBC3(PUMA)
Protein Families:	Druggable Genome



[View online »](#)

Protein Pathways: Huntington's disease, p53 signaling pathway

Product images:



Western blot analysis of BBC3 (PUMA) expression in 293 cells