

Product datasheet for **TA347902**

NGF Rabbit Polyclonal Antibody

Product data:

Product Type:	Primary Antibodies
Applications:	WB
Recommended Dilution:	WB: 1:500-1:2000
Reactivity:	Human, Mouse, Rat
Host:	Rabbit
Isotype:	IgG
Clonality:	Polyclonal
Immunogen:	The immunogen for anti-NGF beta Antibody: A synthesized peptide derived from human NGF beta
Formulation:	Rabbit IgG in phosphate buffered saline , pH 7.4, 150mM NaCl, 0.02% sodium azide and 50% glycerol.Store at -20 ?.Stable for 12 months from date of receipt
Concentration:	lot specific
Purification:	Immunogen affinity purified
Conjugation:	Unconjugated
Storage:	Store at -20°C as received.
Stability:	Stable for 12 months from date of receipt.
Predicted Protein Size:	26 kDa
Gene Name:	nerve growth factor
Database Link:	NP_002497 Entrez Gene 18049 Mouse Entrez Gene 310738 Rat Entrez Gene 4803 Human P01138
Background:	Nerve growth factor is important for the development and maintenance of the sympathetic and sensory nervous systems. Extracellular ligand for the NTRK1 and NGFR receptors, activates cellular signaling cascades through those receptor tyrosine kinase to regulate neuronal proliferation, differentiation and survival.
Synonyms:	Beta-NGF; HSN5; NGFB
Note:	NGF beta Antibody detects endogenous levels of total NGF beta

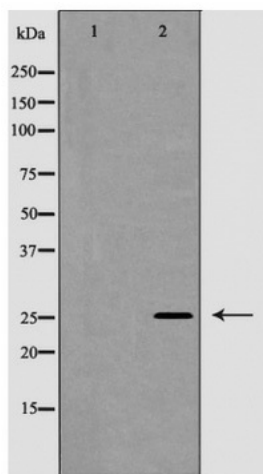


[View online »](#)

Protein Families: Druggable Genome, Secreted Protein

Protein Pathways: Apoptosis, MAPK signaling pathway, Neurotrophin signaling pathway

Product images:



Western blot analysis of NGF beta expression in Jurkat cells