

Product datasheet for **TA347899**

ACE2 Rabbit Polyclonal Antibody (Angiotensin Converting Enzyme 2)

Product data:

Product Type:	Primary Antibodies
Applications:	WB
Recommended Dilution:	WB: 1:500-1:1000
Reactivity:	Mouse, Human
Host:	Rabbit
Isotype:	IgG
Clonality:	Polyclonal
Immunogen:	The immunogen for anti-ACE2 Antibody: A synthesized peptide
Formulation:	Rabbit IgG in phosphate buffered saline , pH 7.4, 150mM NaCl, 0.02% sodium azide and 50% glycerol.Store at -20 ?.Stable for 12 months from date of receipt
Concentration:	lot specific
Purification:	Immunogen affinity purified
Conjugation:	Unconjugated
Storage:	Store at -20°C as received.
Stability:	Stable for 12 months from date of receipt.
Predicted Protein Size:	100-110
Gene Name:	angiotensin I converting enzyme 2
Database Link:	NP_068576 Entrez Gene 70008 Mouse Entrez Gene 59272 Human Q9BYF1
Background:	Carboxypeptidase which converts angiotensin I to angiotensin 1-9, a peptide of unknown function, and angiotensin II to angiotensin 1-7, a vasodilator. Also able to hydrolyze apelin-13 and dynorphin-13 with high efficiency. May be an important regulator of heart function. In case of human coronaviruses SARS and HCoV-NL63 infections, serve as functional receptor for the spike glycoprotein of both coronaviruses.
Synonyms:	ACEH
Note:	ACE2 Antibody detects endogenous levels of total ACE2

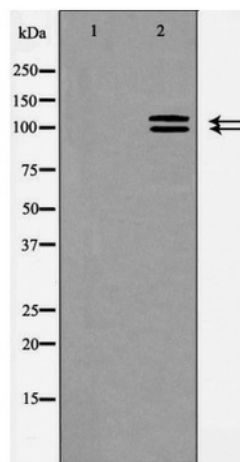


[View online »](#)

Protein Families: Druggable Genome, Secreted Protein, Transmembrane

Protein Pathways: Renin-angiotensin system

Product images:



Western blot analysis of ACE2 expression in HeLa cells