

Product datasheet for **TA347898**

Spasmolytic Polypeptide (TFF2) Rabbit Polyclonal Antibody

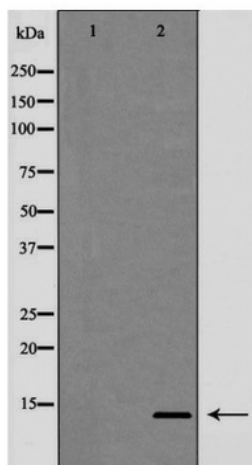
Product data:

Product Type:	Primary Antibodies
Applications:	WB
Recommended Dilution:	WB: 1:500-1:2000
Reactivity:	Human
Host:	Rabbit
Isotype:	IgG
Clonality:	Polyclonal
Immunogen:	The immunogen for anti-Trefoil factor 2(TFF2) Antibody: A synthesized peptide derived from human Trefoil factor 2(TFF2)
Formulation:	Rabbit IgG in phosphate buffered saline , pH 7.4, 150mM NaCl, 0.02% sodium azide and 50% glycerol.Store at -20 ?.Stable for 12 months from date of receipt
Concentration:	lot specific
Purification:	Immunogen affinity purified
Conjugation:	Unconjugated
Storage:	Store at -20°C as received.
Stability:	Stable for 12 months from date of receipt.
Predicted Protein Size:	14 kDa
Gene Name:	trefoil factor 2
Database Link:	NP_005414 Entrez Gene 7032 Human Q03403
Background:	Inhibits gastrointestinal motility and gastric acid secretion. Could function as a structural component of gastric mucus, possibly by stabilizing glycoproteins in the mucus gel through interactions with carbohydrate side chains
Synonyms:	SML1; SP
Note:	Trefoil factor 2(TFF2) Antibody detects endogenous levels of total Trefoil factor 2(TFF2)
Protein Families:	Druggable Genome, Secreted Protein



[View online »](#)

Product images:



Western blot analysis of Trefoil factor 2 (TFF2) expression in HeLa cells