

## Product datasheet for **TA347897**

### MAP2 Rabbit Polyclonal Antibody

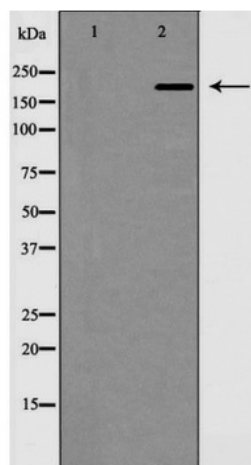
#### Product data:

Product Type:	Primary Antibodies
Applications:	WB
Recommended Dilution:	WB: 1:500-1:2000
Reactivity:	Human, Mouse, Rat
Host:	Rabbit
Isotype:	IgG
Clonality:	Polyclonal
Immunogen:	The immunogen for anti-MAP 2 Antibody: A synthesized peptide derived from human MAP 2
Formulation:	Rabbit IgG in phosphate buffered saline , pH 7.4, 150mM NaCl, 0.02% sodium azide and 50% glycerol.Store at -20 ?.Stable for 12 months from date of receipt
Concentration:	lot specific
Purification:	Immunogen affinity purified
Conjugation:	Unconjugated
Storage:	Store at -20°C as received.
Stability:	Stable for 12 months from date of receipt.
Predicted Protein Size:	199 kDa
Gene Name:	microtubule associated protein 2
Database Link:	<a href="#">NP_114033</a> <a href="#">Entrez Gene 17756 MouseEntrez Gene 25595 RatEntrez Gene 4133 Human P11137</a>
Background:	The exact function of MAP2 is unknown but MAPs may stabilize the microtubules against depolymerization. They also seem to have a stiffening effect on microtubules.
Synonyms:	MAP2A; MAP2B; MAP2C
Note:	MAP 2 Antibody detects endogenous levels of total MAP 2
Protein Families:	Adult stem cells, Druggable Genome, ES Cell Differentiation/IPS



[View online »](#)

## Product images:



Western blot analysis of MAP2 expression in mouse brain