

## Product datasheet for **TA347896**

### Integrin alpha E (ITGAE) Rabbit Polyclonal Antibody

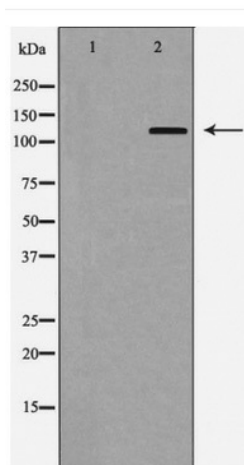
#### Product data:

|                         |   |
|-------------------------|---|
| Product Type:           | Primary Antibodies  |
| Applications:           | WB  |
| Recommended Dilution:   | WB: 1:500-1:2000  |
| Reactivity:             | Human   |
| Host:                   | Rabbit  |
| Isotype:                | IgG   |
| Clonality:              | Polyclonal  |
| Immunogen:              | The immunogen for anti-Integrin aE Antibody: A synthesized peptide derived from human Integrin aE   |
| Formulation:            | Rabbit IgG in phosphate buffered saline , pH 7.4, 150mM NaCl, 0.02% sodium azide and 50% glycerol.Store at -20 ?.Stable for 12 months from date of receipt          |
| Concentration:          | lot specific  |
| Purification:           | Immunogen affinity purified   |
| Conjugation:            | Unconjugated  |
| Storage:                | Store at -20°C as received.   |
| Stability:              | Stable for 12 months from date of receipt.  |
| Predicted Protein Size: | 130 kDa   |
| Gene Name:              | integrin subunit alpha E  |
| Database Link:          | <a href="#">NP_002199</a><br><a href="#">Entrez Gene 3682 Human</a><br><a href="#">P38570</a>   |
| Background:             | Heterodimer of an alpha and a beta subunit. The alpha subunit is composed of a heavy and a light chains linked by a disulfide bond. Alpha-E associates with beta-7. |
| Synonyms:               | CD103; HUMINAE  |
| Note:                   | Integrin aE Antibody detects endogenous levels of total Integrin aE   |
| Protein Families:       | Druggable Genome, ES Cell Differentiation/IPS, Transmembrane  |
| Protein Pathways:       | Regulation of actin cytoskeleton  |



[View online »](#)

Product images:



Western blot analysis of Integrin alpha-E expression in HepG2 cells