

Product datasheet for **TA347894**

EZH2 Rabbit Polyclonal Antibody

Product data:

Product Type:	Primary Antibodies
Applications:	WB
Recommended Dilution:	WB: 1:500-1:2000
Reactivity:	Human, Mouse, Rat
Host:	Rabbit
Isotype:	IgG
Clonality:	Polyclonal
Immunogen:	The immunogen for anti-EZH2 Antibody: A synthesized peptide derived from human EZH2
Formulation:	Rabbit IgG in phosphate buffered saline , pH 7.4, 150mM NaCl, 0.02% sodium azide and 50% glycerol.Store at -20 ?.Stable for 12 months from date of receipt
Concentration:	lot specific
Purification:	Immunogen affinity purified
Conjugation:	Unconjugated
Storage:	Store at -20°C as received.
Stability:	Stable for 12 months from date of receipt.
Predicted Protein Size:	85 kDa
Gene Name:	enhancer of zeste 2 polycomb repressive complex 2 subunit
Database Link:	NP_004447 Entrez Gene 14056 MouseEntrez Gene 312299 RatEntrez Gene 2146 Human Q15910
Background:	Polycomb group (PcG) protein. Catalytic subunit of the PRC2/EED-EZH2 complex, which methylates 'Lys-9' and 'Lys-27' of histone H3, leading to transcriptional repression of the affected target gene. Able to mono-, di- and trimethylate 'Lys-27' of histone H3 to form H3K27me1, H3K27me2 and H3K27me3, respectively. Compared to EZH2-containing complexes, it is more abundant in embryonic stem cells and plays a major role in forming H3K27me3, which is required for embryonic stem cell identity and proper differentiation.
Synonyms:	ENX-1; ENX1; EZH1; EZH2b; KMT6; KMT6A; WVS; WVS2

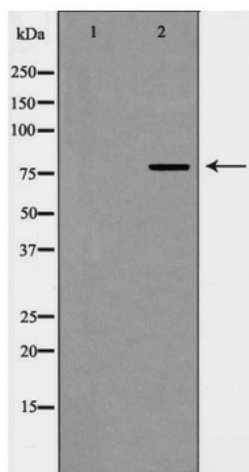


[View online »](#)

Note: EZH2 Antibody detects endogenous levels of total EZH2

Protein Families: Druggable Genome, Transcription Factors

Product images:



Western blot analysis of EZH2 expression in HEK293 cell lysate