

## Product datasheet for **TA347891**

### **MADH7 (SMAD7) Rabbit Polyclonal Antibody**

#### **Product data:**

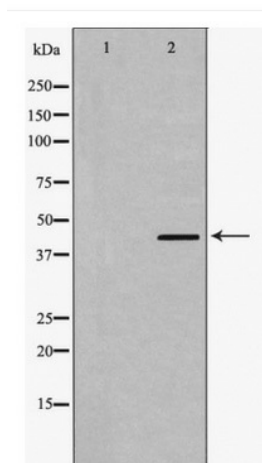
Product Type:	Primary Antibodies
Applications:	WB
Recommended Dilution:	WB 1/500
Reactivity:	Human, Mouse, Rat
Host:	Rabbit
Isotype:	IgG
Clonality:	Polyclonal
Immunogen:	The immunogen for anti-Smad7 Antibody: A synthesized peptide
Formulation:	Rabbit IgG in phosphate buffered saline , pH 7.4, 150mM NaCl, 0.02% sodium azide and 50% glycerol.Store at -20 ?.Stable for 12 months from date of receipt
Concentration:	lot specific
Purification:	Immunogen affinity purified
Conjugation:	Unconjugated
Storage:	Store at -20°C as received.
Stability:	Stable for 12 months from date of receipt.
Predicted Protein Size:	50KD
Gene Name:	SMAD family member 7
Database Link:	<a href="#">NP_005895</a> <a href="#">Entrez Gene 17131 MouseEntrez Gene 81516 RatEntrez Gene 4092 Human Q15105</a>
Background:	Antagonist of signaling by TGF-beta (transforming growth factor) type 1 receptor superfamily members; has been shown to inhibit TGF-beta (Transforming growth factor) and activin signaling by associating with their receptors thus preventing SMAD2 access. Functions as an adapter to recruit SMURF2 to the TGF-beta receptor complex.
Synonyms:	CRCS3; MADH7; MADH8
Note:	Smad7 Antibody detects endogenous levels of total Smad7
Protein Families:	Druggable Genome, Transcription Factors



[View online »](#)

Protein Pathways: TGF-beta signaling pathway

### Product images:



Western blot analysis of Smad7 expression in Human Kidney lysate