

## Product datasheet for **TA347890**

### IL8 (CXCL8) Rabbit Polyclonal Antibody

#### Product data:

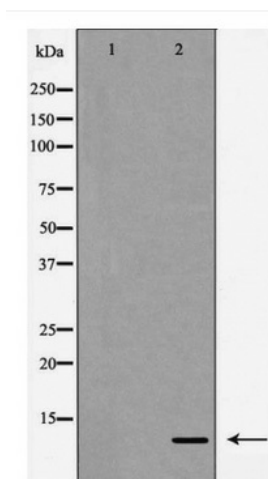
Product Type:	Primary Antibodies
Applications:	WB
Recommended Dilution:	WB: 1:500-1:2000
Reactivity:	Human
Host:	Rabbit
Isotype:	IgG
Clonality:	Polyclonal
Immunogen:	The immunogen for anti-Interleukin 8 Antibody: A synthesized peptide derived from human Interleukin 8
Formulation:	Rabbit IgG in phosphate buffered saline , pH 7.4, 150mM NaCl, 0.02% sodium azide and 50% glycerol.Store at -20 ?.Stable for 12 months from date of receipt
Concentration:	lot specific
Purification:	Immunogen affinity purified
Conjugation:	Unconjugated
Storage:	Store at -20°C as received.
Stability:	Stable for 12 months from date of receipt.
Predicted Protein Size:	11 kDa
Gene Name:	C-X-C motif chemokine ligand 8
Database Link:	<a href="#">NP_000575</a> <a href="#">Entrez Gene 3576 Human</a> <a href="#">P10145</a>
Background:	IL-8 is a chemotactic factor that attracts neutrophils, basophils, and T-cells, but not monocytes. It is also involved in neutrophil activation. It is released from several cell types in response to an inflammatory stimulus.
Synonyms:	GCP-1; GCP1; IL8; LECT; LUCT; LYNAP; MDNCF; MONAP; NAF; NAP-1; NAP1
Note:	Interleukin 8 Antibody detects endogenous levels of total Interleukin 8
Protein Families:	Druggable Genome, Secreted Protein, Transmembrane



[View online »](#)

**Protein Pathways:**

Bladder cancer, Chemokine signaling pathway, Cytokine-cytokine receptor interaction, Epithelial cell signaling in Helicobacter pylori infection, NOD-like receptor signaling pathway, Pathways in cancer, RIG-I-like receptor signaling pathway, Toll-like receptor signaling pathway

**Product images:**

Western blot analysis of Interleukin 8 expression in HeLa cells,