

Product datasheet for **TA347889**

TJP1 Rabbit Polyclonal Antibody

Product data:

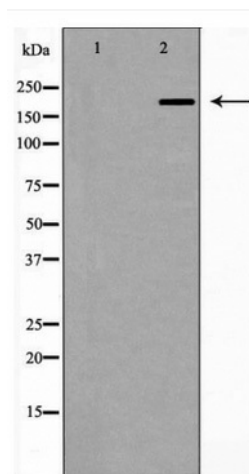
Product Type:	Primary Antibodies
Applications:	WB
Recommended Dilution:	WB: 1:500-1:2000
Reactivity:	Human
Host:	Rabbit
Isotype:	IgG
Clonality:	Polyclonal
Immunogen:	The immunogen for anti-ZO 1 Antibody: A synthesized peptide derived from human ZO 1
Formulation:	Rabbit IgG in phosphate buffered saline , pH 7.4, 150mM NaCl, 0.02% sodium azide and 50% glycerol.Store at -20 ?.Stable for 12 months from date of receipt
Concentration:	lot specific
Purification:	Immunogen affinity purified
Conjugation:	Unconjugated
Storage:	Store at -20°C as received.
Stability:	Stable for 12 months from date of receipt.
Predicted Protein Size:	195 kDa
Gene Name:	tight junction protein 1
Database Link:	NP_003248 Entrez Gene 7082 Human Q07157
Background:	The N-terminal may be involved in transducing a signal required for tight junction assembly, while the C-terminal may have specific properties of tight junctions. The alpha domain might be involved in stabilizing junctions.
Synonyms:	ZO-1
Note:	ZO 1 Antibody detects endogenous levels of total ZO 1
Protein Families:	Druggable Genome



[View online »](#)

Protein Pathways: Adherens junction, Epithelial cell signaling in Helicobacter pylori infection, Gap junction, Tight junction, Vibrio cholerae infection

Product images:



Western blot analysis of ZO 1 expression in Human brain