

## Product datasheet for **TA347888**

### SOD2 Rabbit Polyclonal Antibody

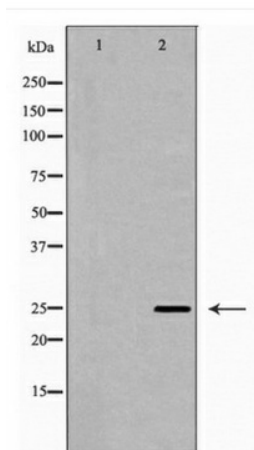
#### Product data:

Product Type:	Primary Antibodies
Applications:	WB
Recommended Dilution:	WB: 1:500-1:2000
Reactivity:	Human, Mouse, Rat
Host:	Rabbit
Isotype:	IgG
Clonality:	Polyclonal
Immunogen:	The immunogen for anti-sod2 Antibody: A synthesized peptide derived from human sod2
Formulation:	Rabbit IgG in phosphate buffered saline , pH 7.4, 150mM NaCl, 0.02% sodium azide and 50% glycerol.Store at -20 ?.Stable for 12 months from date of receipt
Concentration:	lot specific
Purification:	Immunogen affinity purified
Conjugation:	Unconjugated
Storage:	Store at -20°C as received.
Stability:	Stable for 12 months from date of receipt.
Predicted Protein Size:	25 kDa
Gene Name:	superoxide dismutase 2, mitochondrial
Database Link:	<a href="#">NP_000627</a> <a href="#">Entrez Gene 20656 MouseEntrez Gene 24787 RatEntrez Gene 6648 Human P04179</a>
Background:	Mn SOD antibody Mn superoxide dismutase antibody MNSOD antibody MVCD6 antibody SOD 2 antibody SOD2 antibody SODM_HUMAN antibody
Synonyms:	IPOB; MNSOD; MVCD6
Note:	sod2 Antibody detects endogenous levels of total sod2
Protein Families:	Druggable Genome, Transcription Factors
Protein Pathways:	Huntington's disease



[View online »](#)

## Product images:



Western blot analysis of sod2 expression in  
Mouse Spinal Cord lysate