

Product datasheet for **TA347886**

IL4 Rabbit Polyclonal Antibody

Product data:

Product Type:	Primary Antibodies
Applications:	WB
Recommended Dilution:	WB: 1:500-1:2000
Reactivity:	Human
Host:	Rabbit
Isotype:	IgG
Clonality:	Polyclonal
Immunogen:	The immunogen for anti-Interleukin 4 Antibody: A synthesized peptide derived from human Interleukin 4
Formulation:	Rabbit IgG in phosphate buffered saline , pH 7.4, 150mM NaCl, 0.02% sodium azide and 50% glycerol.Store at -20 ?.Stable for 12 months from date of receipt
Concentration:	lot specific
Purification:	Immunogen affinity purified
Conjugation:	Unconjugated
Storage:	Store at -20°C as received.
Stability:	Stable for 12 months from date of receipt.
Predicted Protein Size:	17 kDa
Gene Name:	interleukin 4
Database Link:	NP_758858 Entrez Gene 3565 Human P05112
Background:	Participates in at least several B-cell activation processes as well as of other cell types. It is a costimulator of DNA-synthesis. It induces the expression of class II MHC molecules on resting B-cells. It enhances both secretion and cell surface expression of IgE and IgG1. It also regulates the expression of the low affinity Fc receptor for IgE (CD23) on both lymphocytes and monocytes.
Synonyms:	BCGF-1; BCGF1; BSF-1; BSF1; IL-4

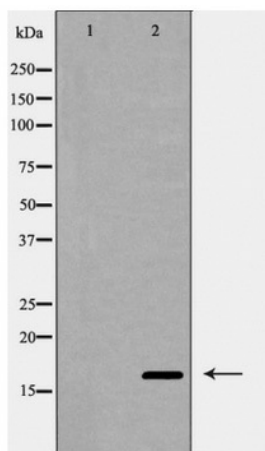


[View online »](#)

Note: Interleukin 4 Antibody detects endogenous levels of total Interleukin 4

Protein Families: Druggable Genome, Secreted Protein

Protein Pathways: Allograft rejection, Asthma, Autoimmune thyroid disease, Cytokine-cytokine receptor interaction, Fc epsilon RI signaling pathway, Hematopoietic cell lineage, Jak-STAT signaling pathway, T cell receptor signaling pathway

Product images:

Western blot analysis of Interleukin 4 expression in MCF-7 cells