

Product datasheet for **TA347885**

CD9 Rabbit Polyclonal Antibody

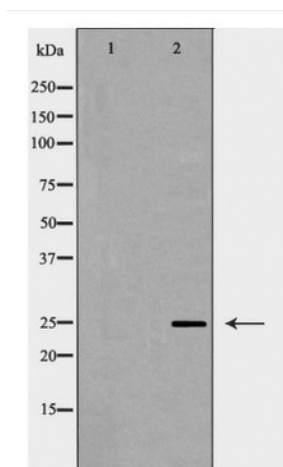
Product data:

Product Type:	Primary Antibodies
Applications:	WB
Recommended Dilution:	WB: 1:500-1:1000
Reactivity:	Human, Mouse, Rat
Host:	Rabbit
Isotype:	IgG
Clonality:	Polyclonal
Immunogen:	The immunogen for anti-CD9 Antibody: A synthesized peptide
Formulation:	Rabbit IgG in phosphate buffered saline , pH 7.4, 150mM NaCl, 0.02% sodium azide and 50% glycerol.Store at -20 ?.Stable for 12 months from date of receipt
Concentration:	lot specific
Purification:	Immunogen affinity purified
Conjugation:	Unconjugated
Storage:	Store at -20°C as received.
Stability:	Stable for 12 months from date of receipt.
Predicted Protein Size:	25KD
Gene Name:	CD9 molecule
Database Link:	NP_001760 Entrez Gene 12527 MouseEntrez Gene 24936 RatEntrez Gene 928 Human P21926
Background:	Involved in platelet activation and aggregation. Regulates paranodal junction formation. Involved in cell adhesion, cell motility and tumor metastasis. Required for sperm-egg fusion.
Synonyms:	BTCC-1; DRAP-27; MIC3; MRP-1; TSPAN-29; TSPAN29
Note:	CD9 Antibody detects endogenous levels of total CD9
Protein Families:	Adult stem cells, Druggable Genome, Embryonic stem cells, ES Cell Differentiation/IPS, Transmembrane
Protein Pathways:	Hematopoietic cell lineage



[View online »](#)

Product images:



Western blot analysis of CD9 expression in COLO cells