

## Product datasheet for **TA347884**

### CD8B Rabbit Polyclonal Antibody

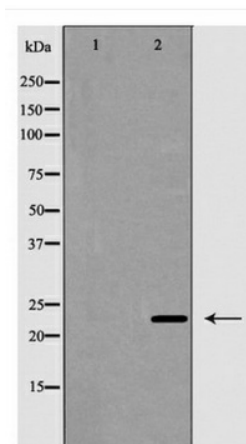
#### Product data:

Product Type:	Primary Antibodies
Applications:	WB
Recommended Dilution:	WB: 1:500-1:2000
Reactivity:	Human
Host:	Rabbit
Isotype:	IgG
Clonality:	Polyclonal
Immunogen:	The immunogen for anti-CD8B Antibody: A synthesized peptide derived from human CD8B
Formulation:	Rabbit IgG in phosphate buffered saline , pH 7.4, 150mM NaCl, 0.02% sodium azide and 50% glycerol.Store at -20 ?.Stable for 12 months from date of receipt
Concentration:	lot specific
Purification:	Immunogen affinity purified
Conjugation:	Unconjugated
Storage:	Store at -20°C as received.
Stability:	Stable for 12 months from date of receipt.
Predicted Protein Size:	23 kDa
Gene Name:	CD8b molecule
Database Link:	<a href="#">NP_757362</a> <a href="#">Entrez Gene 926 Human</a> <a href="#">P10966</a>
Background:	The displayed sequence is further processed into a mature form.
Synonyms:	CD8B1; LEU2; LY3; LYT3; P37
Note:	CD8B Antibody detects endogenous levels of total CD8B
Protein Families:	Druggable Genome, Secreted Protein, Transmembrane
Protein Pathways:	Antigen processing and presentation, Cell adhesion molecules (CAMs), Hematopoietic cell lineage, Primary immunodeficiency, T cell receptor signaling pathway



[View online »](#)

## Product images:



Western blot analysis of CD8B expression in Jurkat cells