

Product datasheet for **TA347881**

IL12A Rabbit Polyclonal Antibody

Product data:

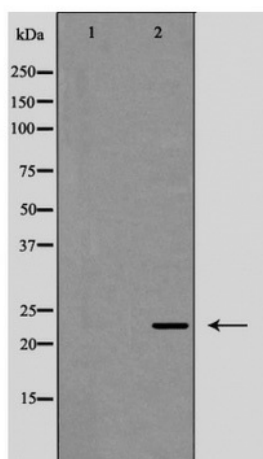
Product Type:	Primary Antibodies
Applications:	WB
Recommended Dilution:	WB: 1:500-1:2000
Reactivity:	Human, Mouse, Rat
Host:	Rabbit
Isotype:	IgG
Clonality:	Polyclonal
Immunogen:	The immunogen for anti-Interleukin 12A Antibody: A synthesized peptide derived from human Interleukin 12A
Formulation:	Rabbit IgG in phosphate buffered saline , pH 7.4, 150mM NaCl, 0.02% sodium azide and 50% glycerol.Store at -20 ?.Stable for 12 months from date of receipt
Concentration:	lot specific
Purification:	Immunogen affinity purified
Conjugation:	Unconjugated
Storage:	Store at -20°C as received.
Stability:	Stable for 12 months from date of receipt.
Predicted Protein Size:	24 kDa
Gene Name:	interleukin 12A
Database Link:	NP_000873 Entrez Gene 16159 Mouse Entrez Gene 84405 Rat Entrez Gene 3592 Human P29459
Background:	Cytokine that can act as a growth factor for activated T and NK cells, enhance the lytic activity of NK/lymphokine-activated Killer cells, and stimulate the production of IFN-gamma by resting PBMC.
Synonyms:	CLMF; IL-12A; NFSK; NKSF1; P35
Note:	Interleukin 12A Antibody detects endogenous levels of total Interleukin 12A
Protein Families:	Druggable Genome, Secreted Protein



[View online »](#)

Protein Pathways: Allograft rejection, Cytokine-cytokine receptor interaction, Jak-STAT signaling pathway, RIG-I-like receptor signaling pathway, Toll-like receptor signaling pathway, Type I diabetes mellitus

Product images:



Western blot analysis of Interleukin 12A expression in HeLa cells