

Product datasheet for **TA347880**

GJB1 Rabbit Polyclonal Antibody

Product data:

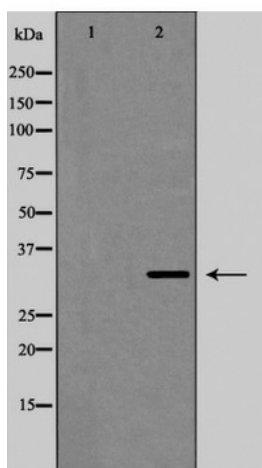
Product Type:	Primary Antibodies
Applications:	WB
Recommended Dilution:	WB: 1:500-1:2000
Reactivity:	Human, Mouse, Rat
Host:	Rabbit
Isotype:	IgG
Clonality:	Polyclonal
Immunogen:	The immunogen for anti-Connexin 32 Antibody: A synthesized peptide derived from human Connexin 32
Formulation:	Rabbit IgG in phosphate buffered saline , pH 7.4, 150mM NaCl, 0.02% sodium azide and 50% glycerol.Store at -20 ?.Stable for 12 months from date of receipt
Concentration:	lot specific
Purification:	Immunogen affinity purified
Conjugation:	Unconjugated
Storage:	Store at -20°C as received.
Stability:	Stable for 12 months from date of receipt.
Predicted Protein Size:	32 kDa
Gene Name:	gap junction protein beta 1
Database Link:	NP_001091111 Entrez Gene 14618 Mouse Entrez Gene 29584 Rat Entrez Gene 2705 Human P08034
Background:	A form of Charcot-Marie-Tooth disease, a disorder of the peripheral nervous system, characterized by progressive weakness and atrophy, initially of the peroneal muscles and later of the distal muscles of the arms. Charcot-Marie-Tooth disease is classified in two main groups on the basis of electrophysiologic properties and histopathology
Synonyms:	CMTX; CMTX1; CX32
Note:	Connexin 32 Antibody detects endogenous levels of total Connexin 32



[View online »](#)

Protein Families: Druggable Genome, Ion Channels: Other, Transmembrane

Product images:



Western blot analysis of Connexin 32 expression in LOVO cells,