

## Product datasheet for **TA347879**

### VEGFA Rabbit Polyclonal Antibody

#### Product data:

Product Type:	Primary Antibodies
Applications:	WB
Recommended Dilution:	WB: 1:500-1:1000
Reactivity:	Human, Mouse, Rat
Host:	Rabbit
Isotype:	IgG
Clonality:	Polyclonal
Immunogen:	The immunogen for anti-VEGF Antibody: Synthetic peptide corresponding to a region derived human vascular endothelial growth factor A
Formulation:	Rabbit IgG in phosphate buffered saline , pH 7.4, 150mM NaCl, 0.02% sodium azide and 50% glycerol.Store at -20 ?.Stable for 12 months from date of receipt
Concentration:	lot specific
Purification:	Immunogen affinity purified
Conjugation:	Unconjugated
Storage:	Store at -20°C as received.
Stability:	Stable for 12 months from date of receipt.
Predicted Protein Size:	28kd
Gene Name:	vascular endothelial growth factor A
Database Link:	<a href="#">NP_001028928</a> <a href="#">Entrez Gene 22339 Mouse</a> <a href="#">Entrez Gene 83785 Rat</a> <a href="#">Entrez Gene 7422 Human</a> <a href="#">P15692</a>
Background:	VEGF is a dimeric glycoprotein with structural homology to PDGF. Several variants of VEGF have been described that arise by alternative mRNA splicing. It has been speculated that VEGF may function as a tumor angiogenesis factor in vivo because the expression pattern of VEGF is consistent with a role in embryonic angiogenesis
Synonyms:	MVCD1; VEGF; VPF
Note:	The antibody detects endogenous level of total VEGFA protein.

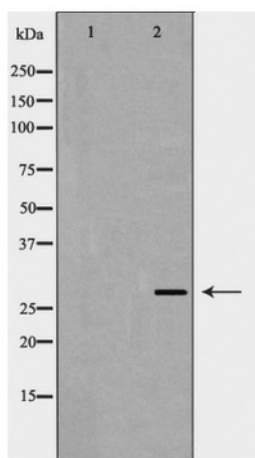


[View online »](#)

**Protein Families:** Druggable Genome, Secreted Protein

**Protein Pathways:** Bladder cancer, Cytokine-cytokine receptor interaction, Focal adhesion, mTOR signaling pathway, Pancreatic cancer, Pathways in cancer, Renal cell carcinoma, VEGF signaling pathway

**Product images:**



Western blot analysis of VEGF expression in A431 cells