

Product datasheet for **TA347876**

CD8A Rabbit Polyclonal Antibody

Product data:

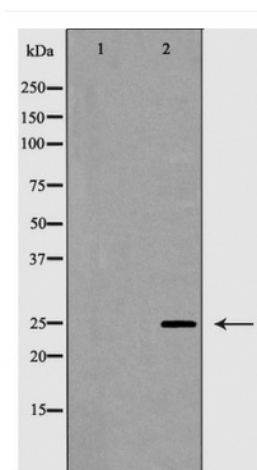
Product Type:	Primary Antibodies
Applications:	WB
Recommended Dilution:	WB: 1:500-1:2000
Reactivity:	Human
Host:	Rabbit
Isotype:	IgG
Clonality:	Polyclonal
Immunogen:	The immunogen for anti-CD8A Antibody: A synthesized peptide derived from human CD8A
Formulation:	Rabbit IgG in phosphate buffered saline , pH 7.4, 150mM NaCl, 0.02% sodium azide and 50% glycerol.Store at -20 ?.Stable for 12 months from date of receipt
Concentration:	lot specific
Purification:	Immunogen affinity purified
Conjugation:	Unconjugated
Storage:	Store at -20°C as received.
Stability:	Stable for 12 months from date of receipt.
Predicted Protein Size:	25 kDa
Gene Name:	CD8a molecule
Database Link:	NP_741969 Entrez Gene 925 Human P01732
Background:	Identifies cytotoxic/suppressor T-cells that interact with MHC class I bearing targets. CD8 is thought to play a role in the process of T-cell mediated killing. CD8 alpha chains binds to class I MHC molecules alpha-3 domains.
Synonyms:	CD8; Leu2; MAL; p32
Note:	CD8A Antibody detects endogenous levels of total CD8A
Protein Families:	Adult stem cells, Druggable Genome, ES Cell Differentiation/IPS, Secreted Protein, Transmembrane



[View online »](#)

Protein Pathways: Antigen processing and presentation, Cell adhesion molecules (CAMs), Hematopoietic cell lineage, Primary immunodeficiency, T cell receptor signaling pathway

Product images:



Western blot analysis of CD8A expression in Jurkat cells