

Product datasheet for **TA347874**

IL5 Rabbit Polyclonal Antibody

Product data:

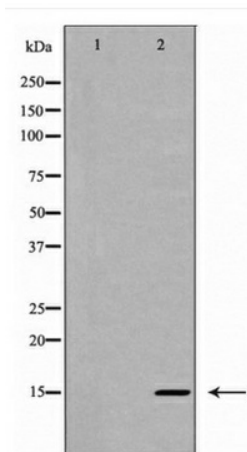
Product Type:	Primary Antibodies
Applications:	WB
Recommended Dilution:	WB: 1:500-1:2000
Reactivity:	Human, Mouse, Rat
Host:	Rabbit
Isotype:	IgG
Clonality:	Polyclonal
Immunogen:	The immunogen for anti-Interleukin 5 Antibody: A synthesized peptide derived from human Interleukin 5
Formulation:	Rabbit IgG in phosphate buffered saline , pH 7.4, 150mM NaCl, 0.02% sodium azide and 50% glycerol.Store at -20 ?.Stable for 12 months from date of receipt
Concentration:	lot specific
Purification:	Immunogen affinity purified
Conjugation:	Unconjugated
Storage:	Store at -20°C as received.
Stability:	Stable for 12 months from date of receipt.
Predicted Protein Size:	15 kDa
Gene Name:	interleukin 5
Database Link:	NP_000870 Entrez Gene 16191 Mouse Entrez Gene 24497 Rat Entrez Gene 3567 Human P05113
Background:	Factor that induces terminal differentiation of late-developing B-cells to immunoglobulin secreting cells.
Synonyms:	EDF; IL-5; TRF
Note:	Interleukin 5 Antibody detects endogenous levels of total Interleukin 5
Protein Families:	Druggable Genome, Secreted Protein



[View online »](#)

Protein Pathways:

Allograft rejection, Asthma, Autoimmune thyroid disease, Cytokine-cytokine receptor interaction, Fc epsilon RI signaling pathway, Hematopoietic cell lineage, Jak-STAT signaling pathway, T cell receptor signaling pathway

Product images:

Western blot analysis of Interleukin 5 expression in HT-29 cells