

Product datasheet for **TA347873**

Vinculin (VCL) Rabbit Polyclonal Antibody

Product data:

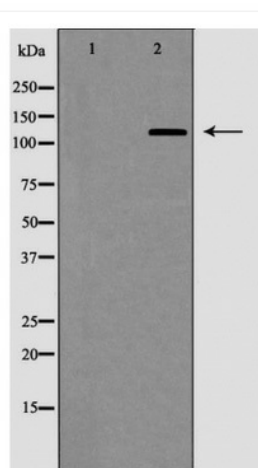
Product Type:	Primary Antibodies
Applications:	WB
Recommended Dilution:	WB: 1:500-1:2000
Reactivity:	Human, Mouse, Rat
Host:	Rabbit
Isotype:	IgG
Clonality:	Polyclonal
Immunogen:	The immunogen for anti-vinculin Antibody: A synthesized peptide derived from human vinculin
Formulation:	Rabbit IgG in phosphate buffered saline , pH 7.4, 150mM NaCl, 0.02% sodium azide and 50% glycerol.Store at -20 ?.Stable for 12 months from date of receipt
Concentration:	lot specific
Purification:	Immunogen affinity purified
Conjugation:	Unconjugated
Storage:	Store at -20°C as received.
Stability:	Stable for 12 months from date of receipt.
Predicted Protein Size:	130 kDa
Gene Name:	vinculin
Database Link:	NP_003364 Entrez Gene 22330 Mouse Entrez Gene 305679 Rat Entrez Gene 7414 Human P18206
Background:	Actin filament (F-actin)-binding protein involved in cell-matrix adhesion and cell-cell adhesion. Regulates cell-surface E-cadherin expression and potentiates mechanosensing by the E-cadherin complex. May also play important roles in cell morphology and locomotion.
Synonyms:	CMD1W; CMH15; HEL114; MV; MVCL
Note:	vinculin Antibody detects endogenous levels of total vinculin
Protein Families:	Druggable Genome



[View online »](#)

Protein Pathways: Adherens junction, Focal adhesion, Leukocyte transendothelial migration, Regulation of actin cytoskeleton

Product images:



Western blot analysis of vinculin expression in HepG2