

Product datasheet for **TA347872**

GJB2 Rabbit Polyclonal Antibody

Product data:

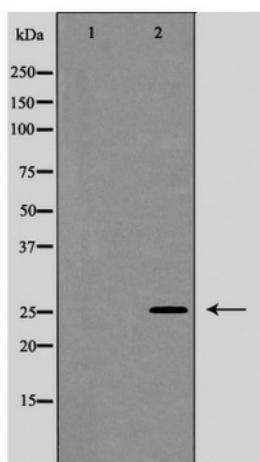
Product Type:	Primary Antibodies
Applications:	WB
Recommended Dilution:	WB: 1:500-1:2000
Reactivity:	Human, Mouse, Rat
Host:	Rabbit
Isotype:	IgG
Clonality:	Polyclonal
Immunogen:	The immunogen for anti-Connexin 26 Antibody: A synthesized peptide derived from the extracellular region of human Connexin 26
Formulation:	Rabbit IgG in phosphate buffered saline , pH 7.4, 150mM NaCl, 0.02% sodium azide and 50% glycerol.Store at -20 ?.Stable for 12 months from date of receipt
Concentration:	lot specific
Purification:	Immunogen affinity purified
Conjugation:	Unconjugated
Storage:	Store at -20°C as received.
Stability:	Stable for 12 months from date of receipt.
Predicted Protein Size:	26 kDa
Gene Name:	gap junction protein beta 2
Database Link:	NP_003995 Entrez Gene 14619 Mouse Entrez Gene 394266 Rat Entrez Gene 2706 Human P29033
Background:	A form of non-syndromic sensorineural hearing loss. Sensorineural deafness results from damage to the neural receptors of the inner ear, the nerve pathways to the brain, or the area of the brain that receives sound information. Note: The disease is caused by mutations affecting the gene represented in this entry.
Synonyms:	CX26; DFNA3; DFNA3A; DFNB1; DFNB1A; HID; KID; NSRD1; PPK
Note:	Connexin 26 Antibody detects endogenous levels of total Connexin 26



[View online »](#)

Protein Families: Druggable Genome, Ion Channels: Other, Transmembrane

Product images:



Western blot analysis of Connexin 26 expression in Jurkat cells