

Product datasheet for **TA347870**

XBP1 Rabbit Polyclonal Antibody

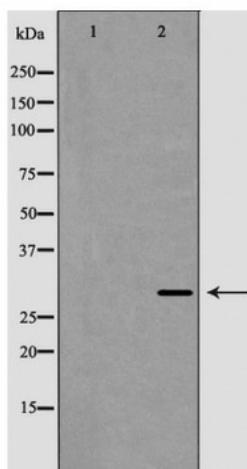
Product data:

Product Type:	Primary Antibodies
Applications:	WB
Recommended Dilution:	WB: 1:500-1:2000
Reactivity:	Human, Mouse, Rat
Host:	Rabbit
Isotype:	IgG
Clonality:	Polyclonal
Immunogen:	The immunogen for anti-XBP1 Antibody: A synthesized peptide derived from human XBP1
Formulation:	Rabbit IgG in phosphate buffered saline , pH 7.4, 150mM NaCl, 0.02% sodium azide and 50% glycerol.Store at -20 ?.Stable for 12 months from date of receipt
Concentration:	lot specific
Purification:	Immunogen affinity purified
Conjugation:	Unconjugated
Storage:	Store at -20°C as received.
Stability:	Stable for 12 months from date of receipt.
Predicted Protein Size:	29 kDa
Gene Name:	X-box binding protein 1
Database Link:	NP_005071 Entrez Gene 22433 MouseEntrez Gene 289754 RatEntrez Gene 7494 Human P17861
Background:	Transcription factor essential for hepatocyte growth, the differentiation of plasma cells, the immunoglobulin secretion, and the unfolded protein response (UPR). Acts during endoplasmic reticulum stress (ER) by activating unfolded protein response (UPR) target genes via direct binding to the UPR element (UPRE).
Synonyms:	TREB-5; TREB5; XBP-1; XBP2
Note:	XBP1 Antibody detects endogenous levels of total XBP1
Protein Families:	Transcription Factors



[View online »](#)

Product images:



Western blot analysis of XBP1 expression in HepG2 cell lysate