

## Product datasheet for **TA347869**

### Insulin (INS) Rabbit Polyclonal Antibody

#### Product data:

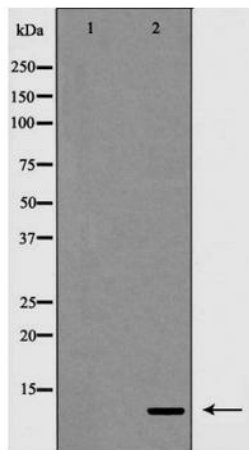
Product Type:	Primary Antibodies
Applications:	IHC, WB
Recommended Dilution:	WB: 1:500-2000, IHC 1:50-1:200
Reactivity:	Human, Mouse, Rat
Host:	Rabbit
Isotype:	IgG
Clonality:	Polyclonal
Immunogen:	The immunogen for anti-Insulin Antibody: A synthesized peptide derived from human Insulin
Formulation:	Rabbit IgG in phosphate buffered saline , pH 7.4, 150mM NaCl, 0.02% sodium azide and 50% glycerol.Store at -20 ?.Stable for 12 months from date of receipt
Concentration:	lot specific
Purification:	Immunogen affinity purified
Conjugation:	Unconjugated
Storage:	Store at -20°C as received.
Stability:	Stable for 12 months from date of receipt.
Predicted Protein Size:	11 kDa
Gene Name:	insulin
Database Link:	<a href="#">NP_000198</a> <a href="#">Entrez Gene 3630 Human</a> <a href="#">P01308</a>
Background:	Insulin decreases blood glucose concentration. It increases cell permeability to monosaccharides, amino acids and fatty acids. It accelerates glycolysis, the pentose phosphate cycle, and glycogen synthesis in liver.
Synonyms:	IDDM; IDDM1; IDDM2; ILPR; IRDN; MODY10
Note:	Insulin Antibody detects endogenous levels of total Insulin
Protein Families:	Druggable Genome, ES Cell Differentiation/IPS, Secreted Protein



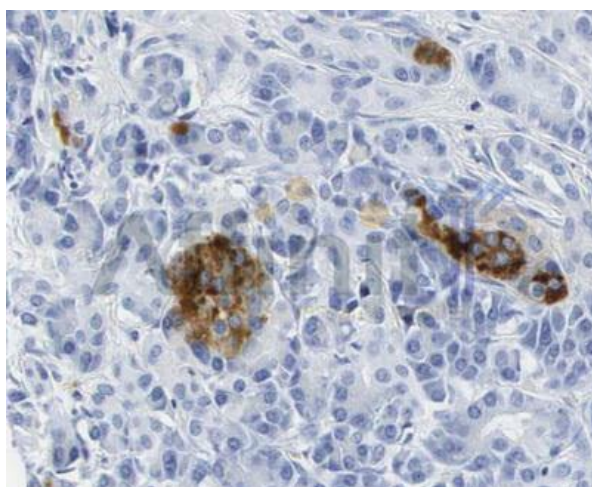
[View online »](#)

**Protein Pathways:**

Insulin signaling pathway, Maturity onset diabetes of the young, mTOR signaling pathway, Oocyte meiosis, Progesterone-mediated oocyte maturation, Prostate cancer, Regulation of actin cytoskeleton, Regulation of autophagy, Type I diabetes mellitus, Type II diabetes mellitus

**Product images:**

Western blot analysis of extracts from PANC-1 cells, using Insulin antibody.



Immunohistochemistry analysis of Insulin antibody in paraffin-embedded human pancreas tissue.