

Product datasheet for **TA347868**

IL20 Rabbit Polyclonal Antibody

Product data:

Product Type:	Primary Antibodies
Applications:	WB
Recommended Dilution:	WB: 1:500-1:2000
Reactivity:	Human, Mouse
Host:	Rabbit
Isotype:	IgG
Clonality:	Polyclonal
Immunogen:	The immunogen for anti-Interleukin 20 Antibody: A synthesized peptide derived from human Interleukin 20
Formulation:	Rabbit IgG in phosphate buffered saline , pH 7.4, 150mM NaCl, 0.02% sodium azide and 50% glycerol.Store at -20 ?.Stable for 12 months from date of receipt
Concentration:	lot specific
Purification:	Immunogen affinity purified
Conjugation:	Unconjugated
Storage:	Store at -20°C as received.
Stability:	Stable for 12 months from date of receipt.
Predicted Protein Size:	20 kDa
Gene Name:	interleukin 20
Database Link:	NP_061194 Entrez Gene 58181 Mouse Entrez Gene 50604 Human Q9NYY1
Background:	Expressed in most tissues and five major cell types: epithelial cells (primarily skin, buccal mucosa, tongue, nasal mucosa, lung, ureter, breast, prostate, fallopian tube, and adrenal gland), myoepithelial cells (mainly prostate), endothelial cells (mainly in small vessels or capillaries), macrophages, and skeletal muscle. Isoform 2 was detected in the lung tissue only
Synonyms:	IL-20; IL10D; ZCYTO10
Note:	Interleukin 20 Antibody detects endogenous levels of total Interleukin 20

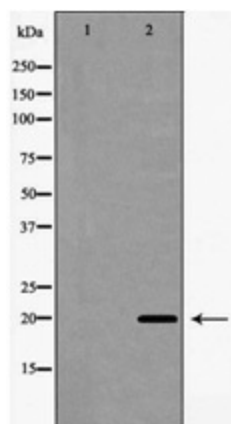


[View online »](#)

Protein Families: Druggable Genome, Secreted Protein

Protein Pathways: Cytokine-cytokine receptor interaction, Jak-STAT signaling pathway

Product images:



Western blot analysis of Interleukin 20 expression in A549 cells