

## Product datasheet for **TA347867**

### IL2 Rabbit Polyclonal Antibody

#### Product data:

|                         |  |
|-------------------------|--|
| Product Type:           | Primary Antibodies   |
| Applications:           | WB   |
| Recommended Dilution:   | WB: 1:500-1:2000   |
| Reactivity:             | Human, Rat   |
| Host:                   | Rabbit   |
| Isotype:                | IgG  |
| Clonality:              | Polyclonal   |
| Immunogen:              | The immunogen for anti-Interleukin 2 Antibody: A synthesized peptide derived from human Interleukin 2  |
| Formulation:            | Rabbit IgG in phosphate buffered saline , pH 7.4, 150mM NaCl, 0.02% sodium azide and 50% glycerol.Store at -20 ?.Stable for 12 months from date of receipt   |
| Concentration:          | lot specific   |
| Purification:           | Immunogen affinity purified  |
| Conjugation:            | Unconjugated   |
| Storage:                | Store at -20°C as received.  |
| Stability:              | Stable for 12 months from date of receipt.   |
| Predicted Protein Size: | 17 kDa   |
| Gene Name:              | interleukin 2  |
| Database Link:          | <a href="#">NP_000577</a><br><a href="#">Entrez Gene 116562 Rat</a> <a href="#">Entrez Gene 3558 Human</a><br><a href="#">P60568</a>   |
| Background:             | Produced by T-cells in response to antigenic or mitogenic stimulation, this protein is required for T-cell proliferation and other activities crucial to regulation of the immune response. Can stimulate B-cells, monocytes, lymphokine-activated killer cells, natural killer cells, and glioma cells. |
| Synonyms:               | IL-2; lymphokine; TCGF   |
| Note:                   | Interleukin 2 Antibody detects endogenous levels of total Interleukin 2  |

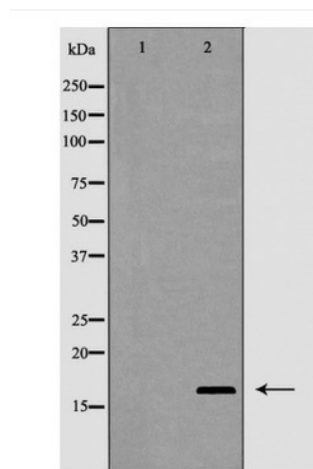


[View online »](#)

**Protein Families:** Druggable Genome, Secreted Protein

**Protein Pathways:** Allograft rejection, Autoimmune thyroid disease, Cytokine-cytokine receptor interaction, Graft-versus-host disease, Jak-STAT signaling pathway, T cell receptor signaling pathway, Type I diabetes mellitus

**Product images:**



Western blot analysis of Interleukin 2 expression in HT-29 cells