

Product datasheet for **TA347866**

Rab5 (RAB5A) Rabbit Polyclonal Antibody

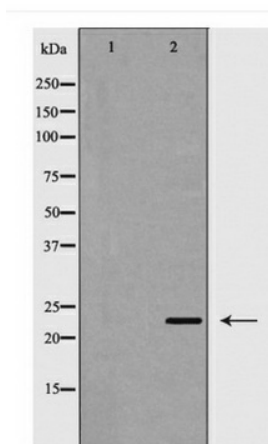
Product data:

Product Type:	Primary Antibodies
Applications:	WB
Recommended Dilution:	WB: 1:500-1:2000
Reactivity:	Mouse, Rat, Human
Host:	Rabbit
Isotype:	IgG
Clonality:	Polyclonal
Immunogen:	The immunogen for anti-Rab5A Antibody: A synthesized peptide derived from human Rab5A
Formulation:	Rabbit IgG in phosphate buffered saline , pH 7.4, 150mM NaCl, 0.02% sodium azide and 50% glycerol.Store at -20 ?.Stable for 12 months from date of receipt
Concentration:	lot specific
Purification:	Immunogen affinity purified
Conjugation:	Unconjugated
Storage:	Store at -20°C as received.
Stability:	Stable for 12 months from date of receipt.
Predicted Protein Size:	24 kDa
Gene Name:	RAB5A, member RAS oncogene family
Database Link:	NP_004153 Entrez Gene 64633 RatEntrez Gene 271457 MouseEntrez Gene 5868 Human P20339
Background:	Required for the fusion of plasma membranes and early endosomes.
Synonyms:	RAB5
Note:	Rab5A Antibody detects endogenous levels of total Rab5A
Protein Families:	Druggable Genome
Protein Pathways:	Amyotrophic lateral sclerosis (ALS), Endocytosis



[View online »](#)

Product images:



Western blot analysis of Rab5A expression in HeLa cell lysate