

## Product datasheet for **TA347856**

### LYVE1 Rabbit Polyclonal Antibody

#### Product data:

Product Type:	Primary Antibodies
Applications:	WB
Recommended Dilution:	WB: 1:500-1:1000
Reactivity:	Human, Mouse, Rat
Host:	Rabbit
Isotype:	IgG
Clonality:	Polyclonal
Immunogen:	The immunogen for anti-LYVE1 Antibody: Peptide sequence around aa.271~275 (K-N-Q-Q-K) derived from Human Lymphatic vessel endothelial hyaluronic acid receptor 1.
Formulation:	Rabbit IgG in phosphate buffered saline , pH 7.4, 150mM NaCl, 0.02% sodium azide and 50% glycerol.Store at -20 ?.Stable for 12 months from date of receipt
Concentration:	lot specific
Purification:	Immunogen affinity purified
Conjugation:	Unconjugated
Storage:	Store at -20°C as received.
Stability:	Stable for 12 months from date of receipt.
Predicted Protein Size:	40 kd
Gene Name:	lymphatic vessel endothelial hyaluronan receptor 1
Database Link:	<a href="#">NP_006682</a> <a href="#">Entrez Gene 114332 MouseEntrez Gene 293186 RatEntrez Gene 10894 Human Q9Y5Y7</a>
Background:	Ligand-specific transporter trafficking between intracellular organelles (TGN) and the plasma membrane. Plays a role in autocrine regulation of cell growth mediated by growth regulators containing cell surface retention sequence binding (CRS). May act as an hyaluronan (HA) transporter, either mediating its uptake for catabolism within lymphatic endothelial cells themselves, or its transport into the lumen of afferent lymphatic vessels for subsequent re-uptake and degradation in lymph nodes.
Synonyms:	CRSBP-1; HAR; LYVE-1; XLKD1

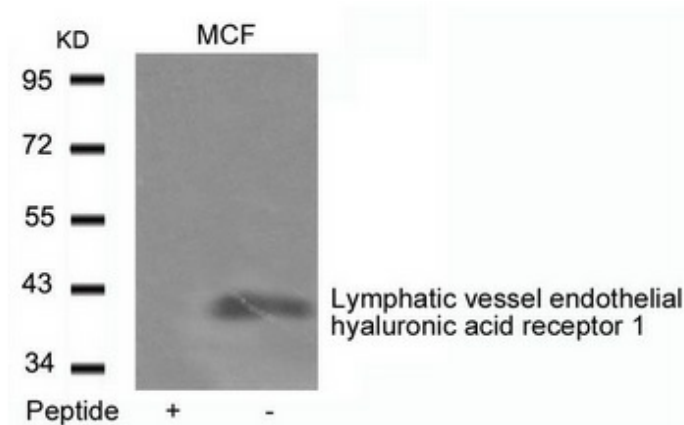


[View online »](#)

**Note:** The antibody detects endogenous level of total Lymphatic vessel endothelial hyaluronic acid receptor 1 protein.

**Protein Families:** Druggable Genome, Transmembrane

### Product images:



Western blot analysis of LYVE1 expression in MCF7 whole cell lysates, the lane on the left is treated with the antigen-specific peptide.