

## Product datasheet for **TA347855**

### FLT4 Rabbit Polyclonal Antibody

#### Product data:

Product Type:	Primary Antibodies
Applications:	WB
Recommended Dilution:	WB: 1:500-1:1000
Reactivity:	Human, Mouse
Host:	Rabbit
Isotype:	IgG
Clonality:	Polyclonal
Immunogen:	The immunogen for anti-VEGFR3 Antibody: Peptide sequence around aa.1279~1283 (L-A-S-E-E) derived from Human VEGFR-3.
Formulation:	Rabbit IgG in phosphate buffered saline , pH 7.4, 150mM NaCl, 0.02% sodium azide and 50% glycerol.Store at -20 ?.Stable for 12 months from date of receipt
Concentration:	lot specific
Purification:	Immunogen affinity purified
Conjugation:	Unconjugated
Storage:	Store at -20°C as received.
Stability:	Stable for 12 months from date of receipt.
Predicted Protein Size:	160kd
Gene Name:	fms related tyrosine kinase 4
Database Link:	<a href="#">NP_891555</a> <a href="#">Entrez Gene 14257 Mouse</a> <a href="#">Entrez Gene 2324 Human</a> <a href="#">P35916</a>
Background:	Tyrosine-protein kinase that acts as a cell-surface receptor for VEGFC and VEGFD, and plays an essential role in adult lymphangiogenesis and in the development of the vascular network and the cardiovascular system during embryonic development. Promotes proliferation, survival and migration of endothelial cells, and regulates angiogenic sprouting. Signaling by activated FLT4 leads to enhanced production of VEGFC
Synonyms:	FLT-4; FLT41; LMPH1A; PCL; VEGFR-3; VEGFR3



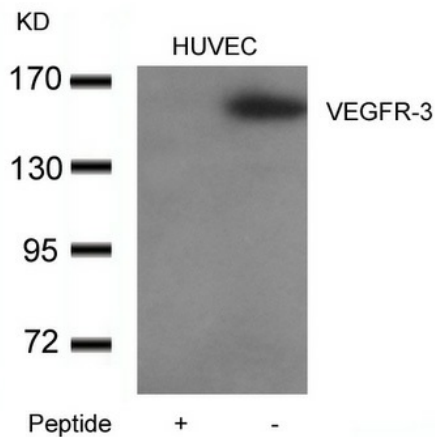
[View online »](#)

**Note:** The antibody detects endogenous level of total VEGFR-3 protein.

**Protein Families:** Druggable Genome, Protein Kinase, Transmembrane

**Protein Pathways:** Cytokine-cytokine receptor interaction, Focal adhesion

### Product images:



Western blot analysis of extracts from HUVEC cells using VEGFR-3 Antibody (right) and the same antibody preincubated with blocking peptide