

Product datasheet for **TA347854**

ATM Rabbit Polyclonal Antibody

Product data:

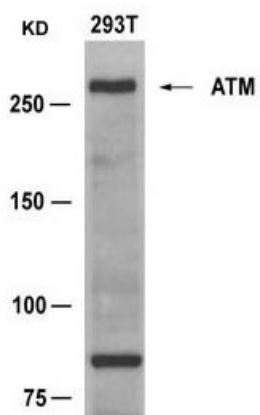
Product Type:	Primary Antibodies
Applications:	WB
Recommended Dilution:	WB: 1:500-1:1000
Reactivity:	Human, Mouse
Host:	Rabbit
Isotype:	IgG
Clonality:	Polyclonal
Immunogen:	The immunogen for anti-ATM Antibody: Peptide sequence around aa.1979~1983 (E-G-S-Q-S) derived from Human ATM.
Formulation:	Rabbit IgG in phosphate buffered saline , pH 7.4, 150mM NaCl, 0.02% sodium azide and 50% glycerol.Store at -20 ?.Stable for 12 months from date of receipt
Concentration:	lot specific
Conjugation:	Unconjugated
Storage:	Store at -20°C as received.
Stability:	Stable for 12 months from date of receipt.
Predicted Protein Size:	350kd
Gene Name:	ATM serine/threonine kinase
Database Link:	NP_000042 Entrez Gene 11920 Mouse Entrez Gene 472 Human Q13315
Background:	ATM encoded by this gene belongs to the PI3/PI4-kinase family. This protein is an important cell cycle checkpoint kinase that phosphorylates; thus, it functions as a regulator of a wide variety of downstream proteins, including tumor suppressor proteins p53 and BRCA1, checkpoint kinase CHK2, checkpoint proteins RAD17 and RAD9, and DNA repair protein NBS1
Synonyms:	AT1; ATA; ATC; ATD; ATDC; ATE; TEL1; TELO1
Note:	The antibody detects endogenous level of total ATM protein.
Protein Families:	Druggable Genome, Protein Kinase, Transcription Factors



[View online »](#)

Protein Pathways: Apoptosis, Cell cycle, p53 signaling pathway

Product images:



Western blot analysis of extracts from 293T cells using ATM Antibody