

Product datasheet for **TA347852**

TWIST2 Rabbit Polyclonal Antibody

Product data:

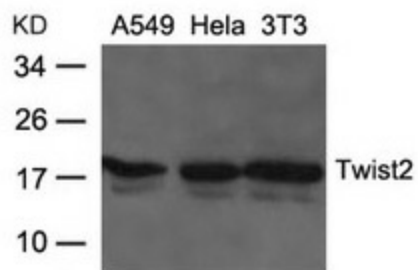
Product Type:	Primary Antibodies
Applications:	WB
Recommended Dilution:	WB: 1:500-1:1000
Reactivity:	Human, Mouse, Rat
Host:	Rabbit
Isotype:	IgG
Clonality:	Polyclonal
Immunogen:	The immunogen for anti-Twist2 Antibody: Peptide sequence around aa.26~30(P-K-R-F-G) derived from Human Twist2.
Formulation:	Rabbit IgG in phosphate buffered saline , pH 7.4, 150mM NaCl, 0.02% sodium azide and 50% glycerol.Store at -20 ?.Stable for 12 months from date of receipt
Concentration:	lot specific
Conjugation:	Unconjugated
Storage:	Store at -20°C as received.
Stability:	Stable for 12 months from date of receipt.
Predicted Protein Size:	18kd
Gene Name:	twist family bHLH transcription factor 2
Database Link:	NP_476527 Entrez Gene 13345 Mouse Entrez Gene 59327 Rat Entrez Gene 117581 Human Q8WVJ9
Background:	Binds to the E-box consensus sequence 5'-CANNTG-3' as a heterodimer and inhibits transcriptional activation by MYOD1, MYOG, MEF2A and MEF2C. Also represses expression of proinflammatory cytokines such as TNFA and IL1B. Involved in postnatal glycogen storage and energy metabolism. Inhibits the premature or ectopic differentiation of preosteoblast cells during osteogenesis, possibly by changing the internal signal transduction response of osteoblasts to external growth factors.
Synonyms:	AMS; BBR SAY; bHLHa39; DERMO1; FFDD3; SETLSS
Note:	The antibody detects endogenous level of total Twist2 protein.



[View online »](#)

Protein Families: Druggable Genome, Transcription Factors

Product images:



Western blot analysis of extracts from A549, HeLa and 3T3 cells using Twist2 Antibody