

Product datasheet for **TA347851**

BRG1 (SMARCA4) Rabbit Polyclonal Antibody

Product data:

Product Type:	Primary Antibodies
Applications:	WB
Recommended Dilution:	WB: 1:500-1:1000
Reactivity:	Human, Mouse, Rat
Host:	Rabbit
Isotype:	IgG
Clonality:	Polyclonal
Immunogen:	The immunogen for anti-Brg1 Antibody: Peptide sequence around aa.701~705(V-D-A-R-H) derived from Human Brg1.
Formulation:	Rabbit IgG in phosphate buffered saline , pH 7.4, 150mM NaCl, 0.02% sodium azide and 50% glycerol.Store at -20 ?.Stable for 12 months from date of receipt
Concentration:	lot specific
Conjugation:	Unconjugated
Storage:	Store at -20°C as received.
Stability:	Stable for 12 months from date of receipt.
Predicted Protein Size:	185,200kd
Gene Name:	SWI/SNF related, matrix associated, actin dependent regulator of chromatin, subfamily a, member 4
Database Link:	NP_001122321 Entrez Gene 20586 MouseEntrez Gene 171379 RatEntrez Gene 6597 Human P51532
Background:	Transcriptional coactivator cooperating with nuclear hormone receptors to potentiate transcriptional activation. Component of the CREST-BRG1 complex, a multiprotein complex that regulates promoter activation by orchestrating a calcium-dependent release of a repressor complex and a recruitment of an activator complex. In resting neurons, transcription of the c-FOS promoter is inhibited by BRG1-dependent recruitment of a phospho-RB1-HDAC repressor complex. Upon calcium influx, RB1 is dephosphorylated by calcineurin, which leads to release of the repressor complex



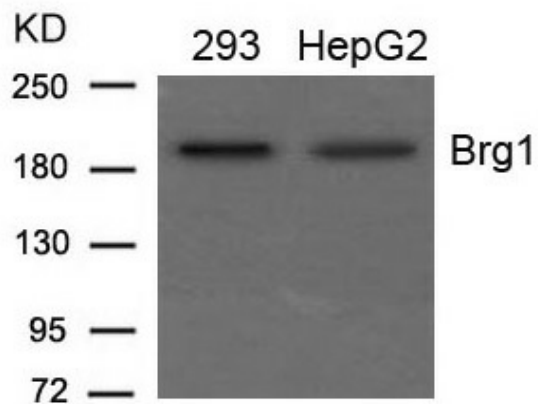
[View online »](#)

Synonyms: BAF190; BAF190A; BRG1; CSS4; hSNF2b; MRD16; RTPS2; SNF2; SNF2L4; SNF2LB; SWI2

Note: The antibody detects endogenous level of total Brg1 protein.

Protein Families: Druggable Genome, Transcription Factors

Product images:



Western blot analysis of extracts from 293 and HepG2 cells using Brg1 Antibody