

## Product datasheet for **TA347850**

### Rex1 (ZFP42) Rabbit Polyclonal Antibody

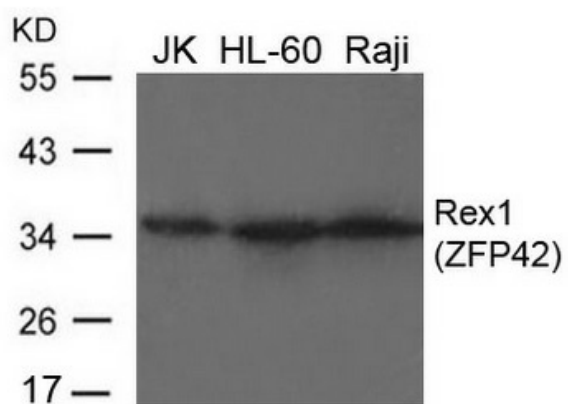
#### Product data:

Product Type:	Primary Antibodies
Applications:	WB
Recommended Dilution:	WB: 1:500-1:1000
Reactivity:	Human
Host:	Rabbit
Isotype:	IgG
Clonality:	Polyclonal
Immunogen:	The immunogen for anti-Rex1(ZFP42) Antibody: Peptide sequence around aa.10~14(K-T-R-H-Q) derived from Human Rex1(ZFP42).
Formulation:	Rabbit IgG in phosphate buffered saline , pH 7.4, 150mM NaCl, 0.02% sodium azide and 50% glycerol.Store at -20 ?.Stable for 12 months from date of receipt
Concentration:	lot specific
Conjugation:	Unconjugated
Storage:	Store at -20°C as received.
Stability:	Stable for 12 months from date of receipt.
Predicted Protein Size:	35kd
Gene Name:	ZFP42 zinc finger protein
Database Link:	<a href="#">NP_777560</a> <a href="#">Entrez Gene 132625 Human</a> <a href="#">Q96MM3</a>
Background:	Involved in self-renewal property of ES cells. May be involved in transcriptional regulation.
Synonyms:	REX-1; REX1; zfp-42; ZNF754
Note:	The antibody detects endogenous level of total Rex1(ZFP42) protein.
Protein Families:	Adult stem cells, Embryonic stem cells, ES Cell Differentiation/IPS, Stem cell - Pluripotency



[View online »](#)

## Product images:



Western blot analysis of extracts from JK, HL-60 and Raji cells using Rex1 (ZFP42) Antibody