

## Product datasheet for **TA347849**

### LGR5 Rabbit Polyclonal Antibody

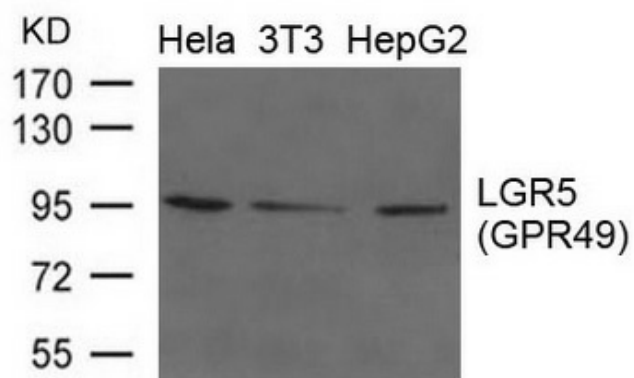
#### Product data:

Product Type:	Primary Antibodies
Applications:	WB
Recommended Dilution:	WB: 1:500-1:1000
Reactivity:	Human, Mouse
Host:	Rabbit
Isotype:	IgG
Clonality:	Polyclonal
Immunogen:	The immunogen for anti-LGR5(GPR49) Antibody: Peptide sequence around aa.490~494(K-I-S-N-Q) derived from Human LGR5(GPR49).
Formulation:	Rabbit IgG in phosphate buffered saline , pH 7.4, 150mM NaCl, 0.02% sodium azide and 50% glycerol.Store at -20 ?.Stable for 12 months from date of receipt
Concentration:	lot specific
Conjugation:	Unconjugated
Storage:	Store at -20°C as received.
Stability:	Stable for 12 months from date of receipt.
Predicted Protein Size:	95kd
Gene Name:	leucine-rich repeat containing G protein-coupled receptor 5
Database Link:	<a href="#">NP_003658</a> <a href="#">Entrez Gene 14160 Mouse</a> <a href="#">Entrez Gene 8549 Human</a> <a href="#">O75473</a>
Background:	Orphan receptor. Stem cell marker of the intestinal epithelium and the hair follicule. Target gene of Wnt signaling.
Synonyms:	FEX; GPR49; GPR67; GRP49; HG38
Note:	The antibody detects endogenous level of total LGR5(GPR49) protein.
Protein Families:	Druggable Genome, GPCR, Transmembrane



[View online »](#)

## Product images:



Western blot analysis of extracts from HeLa, 3T3 and HepG2 cells using LGR5 (GPR49) Antibody