

Product datasheet for **TA347848**

HNF1 beta (HNF1B) Rabbit Polyclonal Antibody

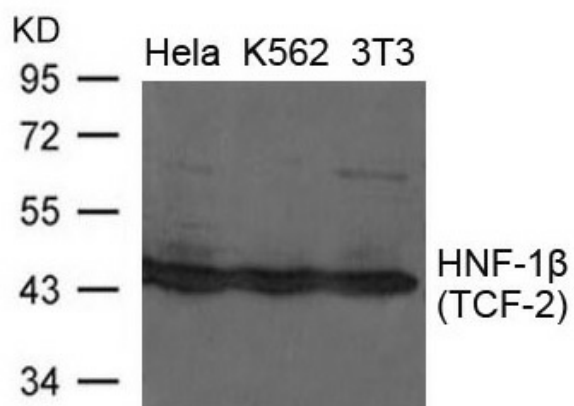
Product data:

Product Type:	Primary Antibodies
Applications:	WB
Recommended Dilution:	WB: 1:500-1:1000
Reactivity:	Human, Mouse, Rat
Host:	Rabbit
Isotype:	IgG
Clonality:	Polyclonal
Immunogen:	The immunogen for anti-HNF-1 β (TCF-2) Antibody: Peptide sequence around aa.252~256(R-Q-K-N-P) derived from Human HNF-1b(TCF-2).
Formulation:	Rabbit IgG in phosphate buffered saline , pH 7.4, 150mM NaCl, 0.02% sodium azide and 50% glycerol.Store at -20 ?.Stable for 12 months from date of receipt
Concentration:	lot specific
Conjugation:	Unconjugated
Storage:	Store at -20°C as received.
Stability:	Stable for 12 months from date of receipt.
Predicted Protein Size:	45,58,61kd
Gene Name:	HNF1 homeobox B
Database Link:	NP_000449 Entrez Gene 21410 Mouse Entrez Gene 25640 Rat Entrez Gene 6928 Human P35680
Background:	Transcription factor, probably binds to the inverted palindrome 5'-GTTAATNATTAAC-3'.
Synonyms:	FJHN; HNF-1-beta; HNF-1B; HNF1beta; HNF2; HPC11; LF-B3; LFB3; MODY5; TCF-2; TCF2; VHNF1
Note:	The antibody detects endogenous level of total HNF-1b(TCF-2) protein.
Protein Families:	Druggable Genome, Embryonic stem cells, ES Cell Differentiation/IPS, Transcription Factors
Protein Pathways:	Maturity onset diabetes of the young



[View online »](#)

Product images:



Western blot analysis of extracts from HeLa, K562 and 3T3 cells using HNF-1b (TCF-2) Antibody