

## Product datasheet for **TA347846**

### ENO3 Rabbit Polyclonal Antibody

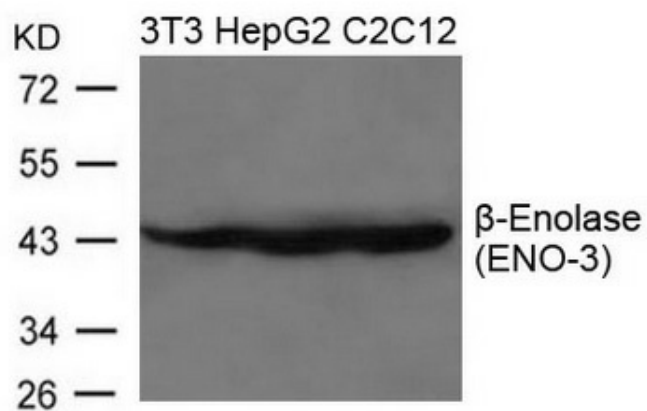
#### Product data:

Product Type:	Primary Antibodies
Applications:	WB
Reactivity:	Human
Host:	Rabbit
Isotype:	IgG
Clonality:	Polyclonal
Immunogen:	The immunogen for anti-b-Enolase(ENO-3) Antibody: Peptide sequence around aa.49~53(L-R-D-G-D) derived from Human b-Enolase(ENO-3).
Formulation:	Rabbit IgG in phosphate buffered saline , pH 7.4, 150mM NaCl, 0.02% sodium azide and 50% glycerol.Store at -20 ?.Stable for 12 months from date of receipt
Concentration:	lot specific
Conjugation:	Unconjugated
Storage:	Store at -20°C as received.
Stability:	Stable for 12 months from date of receipt.
Predicted Protein Size:	45kd
Gene Name:	enolase 3
Database Link:	<a href="#">NP_443739</a> <a href="#">Entrez Gene 2027 Human</a> <a href="#">P13929</a>
Background:	Appears to have a function in striated muscle development and regeneration.
Synonyms:	GSD13; MSE
Note:	The antibody detects endogenous level of total b-Enolase(ENO-3) protein.
Protein Pathways:	Glycolysis / Gluconeogenesis, Metabolic pathways, RNA degradation



[View online »](#)

## Product images:



Western blot analysis of extracts from 3T3, HepG2 and C2C12 cells using  $\beta$ -Enolase (ENO-3) Antibody