

Product datasheet for **TA347844**

Dynamin 1 (DNM1) Rabbit Polyclonal Antibody

Product data:

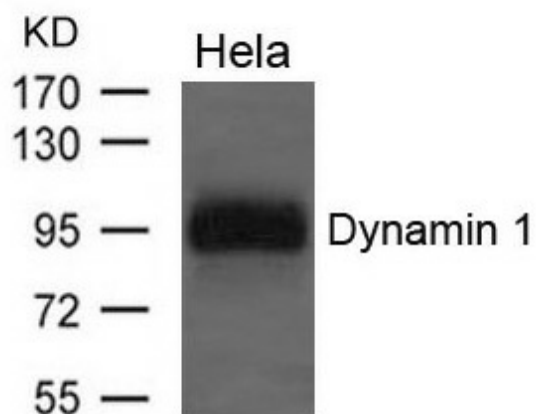
Product Type:	Primary Antibodies
Applications:	WB
Recommended Dilution:	WB: 1:500-1:1000
Reactivity:	Human, Mouse, Rat
Host:	Rabbit
Isotype:	IgG
Clonality:	Polyclonal
Immunogen:	The immunogen for anti-Dynamin 1 Antibody: Peptide sequence around aa.774~778(S-P-T-S) derived from Human Dynamin 1
Formulation:	Rabbit IgG in phosphate buffered saline , pH 7.4, 150mM NaCl, 0.02% sodium azide and 50% glycerol.Store at -20 ?.Stable for 12 months from date of receipt
Concentration:	lot specific
Conjugation:	Unconjugated
Storage:	Store at -20°C as received.
Stability:	Stable for 12 months from date of receipt.
Predicted Protein Size:	100kd
Gene Name:	dynamin 1
Database Link:	NP_004399 Entrez Gene 13429 Mouse Entrez Gene 140694 Rat Entrez Gene 1759 Human Q05193
Background:	Microtubule-associated force-producing protein involved in producing microtubule bundles and able to bind and hydrolyze GTP. Most probably involved in vesicular trafficking processes. Involved in receptor-mediated endocytosis "SNX9 regulates dynamin assembly and is required for efficient clathrin-mediated endocytosis."
Synonyms:	DNM
Note:	The antibody detects endogenous levels of total Dynamin 1 protein.
Protein Families:	Druggable Genome



[View online »](#)

Protein Pathways: Endocytosis, Fc gamma R-mediated phagocytosis

Product images:



Western blot analysis of extracts from HeLa cells using Dynamin 1 Antibody